

2017 DAIRY DIRECTORY



DoveaGENETICS

Maximizing Your Herd's Genetic Potential

INTRODUCTION

Welcome to the 2017 Dovea Genetics Dairy Directory. We are delighted to have a wide and diverse range of dairy sires from our high EBI genomic sires, pure Friesian sires, daughter proven sires, high type sires and a wide range of crossbreeding sires which will suit your production system.

The company is delighted to have some of the highest EBI bulls available in the country with the following bulls having an EBI over €320: Parkduv Falcon (FR4100), Coolnasoon Art (FR2249), Ronnoco View (FR4099). These young bulls have complimented our existing panel of bulls and shows the strength in depth that Dovea Genetics now has in terms of high EBI sires. We continue to source and identify young high EBI bulls for our genomics programme. These bulls will be the future cornerstones of your herd for future years. The bulls are selected on milk solids, fertility and health traits which will leave long lasting healthy productive profitable cows for you to milk. If you have a pregnancy or bull calf of interest please contact Tim Fitzmaurice, Dairy Programme Manager with the relevant details. We have paid and will continue to pay the top prices of any AI centre in Ireland to obtain the highest EBI bull calves.

In addition to our high EBI genomic sires Dovea is delighted to have the No. 1 Pure Friesian bull on EBI: Jubilaris (JRB). Dovea has the largest selection of pure Friesian bulls available in Ireland. Dovea is committed to the pure Friesian and continues to purchase test pure Friesian bulls (see page 42) and progeny test them.

There has been changes in the EBI since our last publication. In the August 2016 proof run from ICBF the EBI genetic base cow, which is the genetic reference point for all dairy cattle in Ireland, became younger, as we moved from a 1995 to a 2005 born genetic base cow. The effect on the EBI is that all animals will be scaled back by €71 on average. Please speak to one of our area representatives or A.I. technicians if you need clarity on this change to the EBI.

We have given increased focus in our 2017 Dairy Directory to beef bulls suitable for the dairy herd. Dovea Genetics has invested heavily in beef bulls for this market and are delighted to have an improving selection of short gestation easy calving bulls in the directory which tick these boxes for the dairy farmer. The growing dairy herd in Ireland will plateau in time and result in more beef semen used on the dairy herd. We will continue to purchase beef bulls for this market and would be delighted to hear your feedback on our selection of beef bulls for this market and any improvements we can make.

Good luck with your breeding in 2017 from all in Dovea Genetics.

Dr. Ger Ryan
General Manager

High Reliability Easy Calving Sires Suitable for Maiden Heifers

Genomic Sires		
Code	Name	Page
SEW	Searoad AWS Pamela 1	5
FR2232	Clochrua Radney Levi	10
FJM	Doonmanagh HYM Mossy	12
XTG	Tisaxon Dougie	12

Daughter Proven Sires		
Code	Name	Page
ZPB	Ballygoha Philip	21
AZG	Deansgrove Argent	21
LCK	Lynbrook Oman Classic	24
FR2250	Co-op Robust Jitterbug	26
OYK	Loydie	28

aAa Sires		
Code	Name	Page
S2066	Tackleberry	31
FR2291	Peeldijker Outlaw	31
S1330	Malando	31
FR2292	Lady Lover	31
S2043	Juno	32
S2159	Floyd	33
S2064	Rivelino 409	34

Jerseys & Jersey Cross		
Code	Name	Page
JE2263	Woodtown Primus Prime	46
JE2017	Nextgen Trevor	46
FR4138	Dovea Fitzmaurice	46

Friesian Sires		
Code	Name	Page
FCM	Catlane Masterchef	35
PDY	Big Piet Adema	38
KKM	Lakemead Dan	38
DHZ	Dunum Helmut	38
RVJ	Raheenarran BCG Sochar	40

Norwegian Red Sires		
Code	Name	Page
EKE	Eik	43
VLX	Val	44

Montbeliardes		
Code	Name	Page
MO2281	Hummer	49
MO4146	Ilanne	50

HIGH EB1 GENOMIC SIREs

SEW	Searoad AWS Pamela 1	5
FR2274	Stonecarthy Scairt	6
FR2317	Derrinsallow Ivor	6
FR2238	Killavalla Chance	7
FR2380	Fowlerstown Prophet	8
FR2249	Coolnasoon Art	9
FR2232	Clochrua Radney Levi	10
FR2314	Gortcreen Sebastain	10
FR2275	Stonecarthy Gleanna	11
FJM	Doonmanagh HYM Mossy.....	12
XTG	Tisaxon Dougie	12
GZY	Gaddagh Cuddy Reeks	13
TFZ	Fortfergus Artic Orca	13
AGH	Aghawadda Arthur	14
ZRL	Curra Royal Laurence	14
FR4098	Radney Steve	15
FR2245	Imleach Cuddy Clive	16
JRE	Gurtatrea JR Everest	16
FZC	Castleblagh Ruthless	16
FR2277	Aughnageragh Ben	17
FR2315	Carnview PSZ Alpha 1333	17
FR2273	Browney PSZ Station	17

2017 Release High EB1 Sires

FR4154	Haggard Franko	18
FR4123	Hanrahan Royalty	18
FR4101	Ballygown SEW Tyler	18
FR4099	Ronnoco View	19
FR4100	Parkdub Falcon	19
FR4132	Rustysheer Rusty	20
FR4102	Islandboy Bunworth	20
FR4103	Rosbane Leo 1112	20

DAUGHTER PROVEN EB1 SIREs

ZPB	Ballyogaha Philip	21
AZG	Deansgrove Argent	21
DBW	Doonmanagh DSU Bowser	22
DGC	Dungourney Cremin	22
KYD	Lackcastle Kenny	22
PIM	Pimorin	23
S1383	Massey	23
S2013	Lasse P	24
LCK	Lynbrook Oman Classic	24
S2019	Sequoia	24
S1599	Army	25
S2189	Banning	25
FR2287	Jamming	26
S2296	Mandella	26
FR2250	Co-op Robust Jitterbug	26
JUX	Jerudo	27
S2304	Interstice	27
S1622	Denim	28
FR2318	Carlino	28
OYK	Loydie	28
FR4179	Monolit	29
SKW	Lynbrook Splendor	29
S1689	Big Maiki	30
	Other Bulls Available	30

aAa SIREs

FR2291	Peeldijker Outlaw	31
S2066	Tackleberry	31
S1330	Malando	31
FR2292	Lady Lover	31
S2041	Murphy	32
S2107	Pirlo	32
FR2125	Big Winner	32
S2043	Juno	32

S2159	
S2291	
S2149	
S1672	
FR4161	
FR2295	
FR2293	
S2064	

JRB	
FOE	
FR4079	
FCM	
PDY	
KKM	
DHZ	
ZSC	
WZB	
SGC	
RVJ	
RIP	
TMI	
FR2126	
KKG	
FR2279	
KJY	
FR2276	

EKE	
ZBR	
EGE	
VLX	
NR4171	
NR4173	

JE2263	
JE2017	
FR4138	

S2287	
MS2174	
S1170	

S506	
AY2289	

SI2175	
SI2307	

S1466	
S2301	

S1259	
MO2281	
MO2284	
MO4145	
MO4144	
MO4146	
MO2283	
MO2285	
S1019	

aAa SIREs

Floyd	33
Arkansas	33
Mr. Justin	33
Jones	33
Eragon P	34
Iceman	34
Kallisto Red	34
Rivelino 409	34

PURE FRIESIANS

Dovea Jubilaris	35
Firoda Meinse 2	35
Mountain Basil 11	36
Catlane Masterchef	36
Big Piet Adema	37
Lakemead Dan	37
Dunum Helmut	37
Sliabhnambon Champion 6	38
Dunum Brandrew	38
Shangan Cameron 3	38
Raheenarran BCG Sochar	39
Reary McCarthy	39
Tittenser Meinse	39
Big Piet Adema 193	40
Manorpark Google	40
Templemichael Zebo	40
Kirkby Jayson	41
Firoda Randy 7	41
Test Friesians	42

NORWEGIAN REDS

Eik	43
Braut	43
Eggtroen	44
Val	44
Saur	45
Sitje	45

JERSEY & CROSSBRED

Woodtown Primus Prime	46
Nextgen Trevor	46
Dovea Fitzmaurice	46

SHORTHORN

Strickley Maximus	47
Clarefield Millman	47
Prides Prophet	47

NORMANDE

Royal Holl	47
-------------------	-------	----

AYSHIRE

Clonbella Percy's Siren	47
--------------------------------	-------	----

FLECKVIEH

Haddock	48
Valentin	48

BROWN SWISS

Professor	48
ROTBUNT	48
Damian	48

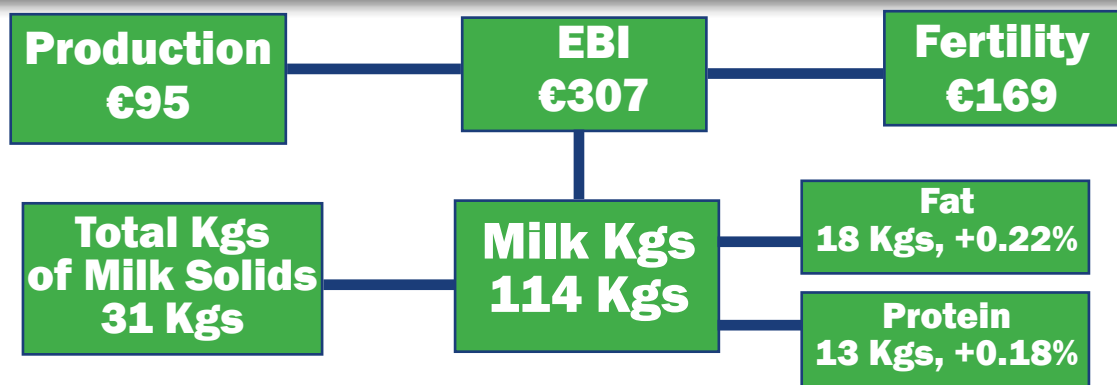
MONTBELIARDE

Crasat	49
Hummer	49
Elastar	49
Ioupy	50
Ialgan	50
Ilanne	50
Ficastone	51
Cortil	51
Dahon	51

BEEF FOR THE DAIRY HERD

	52
--	-------	----

Dovea Genetics Leading the Way with EBI Our Top 12 Active Holstein Friesian Bulls Average



What Do the Symbols in the Catalogue Mean?

A2/A2 Milk

Dovea Bulls that have A2A2 milk are marked in the catalogue with: 

What is aAa?

The origin of the aAa method is a dairy cattle breeding guide based on the principle that the way an animal's parts are formed together determines how the animal functions. The six aAa numbers represent six predictable patterns of qualities. These numbers are assigned by independent aAa and Weeks Approved analyzers for a cow in the order she needs them and for a bull in the order he sires them. Greatest improvement in the next generation is made by selecting high quality bulls, then using them by closely matching their aAa numbers to those of the cows on which they are used. For further information, see www.aaaweeks.com

Sexed Semen

Bulls that are available in sexed semen are marked in the catalogue with: 

Breed	Code	Name	Page
HO/FR	FJM	Doonmanagh HMY Mossy	12
HO/FR	XTG	Tisaxon Dougie	12
HOL	S1383	Co-Op Bosside Massey	23
HOL	S2019	Wilra Boliver Sequoia	24
HOL	S1599	Co-Op Jetstream Army	25
HOL	S1622	De-Su Freddie Denim	28

Breed	Code	Name	Page
HOL	OYK	Co-Op Oman Loydie	28
HOL	FR2291	Peeldijker Outlaw	31
FR	FR2126	Big Piet Adema 193	38
MO	S1259	Crasat	49
MO	MO2281	Hummer	49
MO	MO2283	Ficastone	51

Easy Calving Sires Suitable for Maiden Heifers

Easy calving sires suitable to use on maiden heifers are marked in the catalogue with: 

Health & Safety

Health and Safety has become an important issue on Irish dairy farms. For our A.I. technician's safety and to achieve the best conception rates, proper handling and restraining facilities must be in place using A.I.

Pedigree Status

There are a number of genomic sires in our 2017 Dairy Directory that we have classified as **SRM**. The use of these bulls in a pedigree herd will affect the pedigree status of subsequent progeny. Please contact us in Dovea if you wish to discuss further.

ICBF Base Change

The EBI Figures from the ICBF December 2016 Proof Run Have All Been Scaled Back by €71 as a Result of a Base Change. The Base Cow (Genetic Reference Point for How All Dairy Cattle are Assessed) was Updated from a 1995 to a 2005 Born Base Cow.



IE191183811306

FR 16%

AWS X KOZ X RMW

**Breeder: L. Houlihan, Ballyduff,
Co. Kerry**

aAa: 234



- **Ireland's No. 1 Choice For All Maiden Heifers (1.30% Calving Difficulty Based On 7,719 Calvings)**
- **Maintenance Sub Index Of +€18**
- **Great Sub Index For Health +€6**
- **Dam VG87 Has Incredible Fertility & Production On A Grass Based System**



Searoad KOZ Pamela VG (Dam of SEW)

ICBF December 2016		Sub Index	
	€	Rel. %	
EBI	249	63	
MILK	80	68	
Milk Kgs	+86	68	
Fat	+17 Kgs, +0.22%	68	
Protein	+11 Kgs, +0.13%	68	
FERTILITY	116	54	
Calving Interval (Days)	-6.87	54	
Survival (%)	2.51	54	
CALVING	55	91	
Direct Calving Diff. (%)	1.30	99	
Gestation Length (Days)	-5.10	99	
BEEF	-24	83	
MAINTENANCE	18	54	
MANAGEMENT	0	28	
HEALTH	6	52	

Calving Date	Yield	Fat %	Protein %	Days	Total Kgs Solids
21/01/13	7,123	+4.21	+3.47	305	547
29/01/14	7,675	+4.34	+3.71	305	618
30/01/15	9,325	+4.27	+3.53	305	728
24/01/16	9,463	+4.52	+3.60	287	768

STONECARTHY SCAIRT (FR2274)

Genomic Proof

IE211299680968

FR 31% 

GZY X FLT X KLZ

Breeder: J. Sheehan, Stoneyford,
Co. Kilkenny

aAa: 546



ICBF December 2016		Sub Index	
	€	Rel. %	
EBI	305	48	
MILK	91	55	
Milk Kgs	+16	55	
Fat	+17 Kgs, +0.28%	55	
Protein	+11 Kgs, +0.19%	55	
FERTILITY	180	44	
Calving Interval (Days)	-9.65	44	
Survival (%)	5.03	44	
CALVING	44	66	
Direct Calving Diff. (%)	2.20	60	
Gestation Length (Days)	-3.88	82	
BEEF	-3	44	
MAINTENANCE	-7	40	
MANAGEMENT	0	19	
HEALTH	-1	41	

- Outstanding Solids of +0.28% Fat & +0.19% Protein
- Ideal A + B - C Milk Payment System Sire
- Dam & Granddam Classified VG
- Backed by Generations of High Production Cows with Great Fertility

DERRINSALLOW IVOR (FR2317)

Genomic Proof

IE331015831528

FR 16% 

FZC X IRP X DUT

Breeder: J. Murray, Birr, Co. Offaly

a2a2 Milk

aAa: 135



Derrinsallow Agnes (Dam of FR2317)

ICBF December 2016		Sub Index	
	€	Rel. %	
EBI	287	49	
MILK	68	59	
Milk Kgs	+10	59	
Fat	+15 Kgs, +0.25%	59	
Protein	+8 Kgs, +0.13%	59	
FERTILITY	180	47	
Calving Interval (Days)	-9.55	47	
Survival (%)	5.12	47	
CALVING	30	53	
Direct Calving Diff. (%)	3.20	50	
Gestation Length (Days)	-2.50	60	
BEEF	-7	39	
MAINTENANCE	10	38	
MANAGEMENT	-2	19	
HEALTH	8	43	

- Interesting Outcross Bloodline, No Hugo (UYC) or Oman (OJI) in Pedigree
- Transmits Great Solids
- Massive Fertility Improver With Sub Index of €180
- Great Health Trait of +€8



IE331140272837

FR 41%

PSZ X WDS X TIH

**Breeder: M. Ryan, Templederry,
Co. Tipperary**

aAa: 534



**a2a2
Milk**

- **Incredible EBI of €319**
- **+0.20% of Fat & +0.18% of Protein**
- **Excellent Sub Index for Maintenance of €17**
- **41% Friesian**
- **Outcross Bloodline - No Oman in Pedigree**



Killavalla Primrose 14 (Dam of FR2238)

ICBF December 2016		Sub Index	
	€	Rel. %	
EBI	319	55	
MILK	89	68	
Milk Kgs	+43	68	
Fat	+14 Kgs, +0.20%	68	
Protein	+12 Kgs, +0.18%	68	
FERTILITY	188	52	
Calving Interval (Days)	-9.93	52	
Survival (%)	5.36	52	
CALVING	49	54	
Direct Calving Diff. (%)	1.70	50	
Gestation Length (Days)	-4.42	61	
BEEF	-24	46	
MAINTENANCE	17	42	
MANAGEMENT	-2	32	
HEALTH	2	49	



IE281381581712

FR 9%

GZY x PKK x OJI

Breeder: R.Moore & Sons, Stamullen, Co. Meath

aAa: N/A



Fowlerstown Crocus 42 GP83 (Dam of FR2380)

1st Lactation: 6,196 Kgs of Milk, 5.84% of Fat, 3.99% of Protein, 275 Days.

- **New Superstar for Dovea**
- **Tremendous Sub Indexes for Milk & Fertility**
- **+37 Kgs of Milk Solids**
- **+0.37% Fat & +0.20% Protein**
- **Bred from a Great Cow Family with 60 Years of Pedigree Breeding**
- **Positive for Type**

ICBF December 2016		Sub Index	
	€	Rel. %	
EBI	297	45	
MILK	106	52	
Milk Kgs	+51	52	
Fat	+24 Kgs, +0.37%	52	
Protein	+13 Kgs, +0.20%	52	
FERTILITY	157	40	
Calving Interval (Days)	-8.04	40	
Survival (%)	4.79	40	
CALVING	28	53	
Direct Calving Diff. (%)	2.50	50	
Gestation Length (Days)	-2.01	60	
BEEF	-11	45	
MAINTENANCE	7	40	
MANAGEMENT	5	16	
HEALTH	5	38	



Fowlerstown Crocus 28 EX-2E (Granddam of FR2380)

6th Lactation Average: 7,835Kgs of Milk, 5.09% of Fat, 3.69% of Protein, 305 Days



IE141827832449

FR 25%

AGH X IRP X CWJ

**Breeder: M. Murphy, Macroom,
Co. Cork**

aAa: 243

Coolnasoon Nuala 33 VG (Dam of FR2249)

**Dam Averaged 3.96% of Protein in
Her 1st 3 Lactations with a 361 Day
Calving Interval**



- **One of Ireland's Most Exciting Sires with EBI of €324**
- **Incredible Sub Indexes of €122 for Milk & €164 for Fertility**
- **+36 Kgs of Milk Solids**
- **+0.19% of Protein**
- **Outcross Sire with No Oman in Pedigree**
- **Dam & Granddam Classified VG**

ICBF December 2016	Sub Index	
	€	Rel. %
EBI	324	50
MILK	122	60
Milk Kgs	+211	60
Fat	+18 Kgs, +0.16%	60
Protein	+18 Kgs, +0.19%	60
FERTILITY	164	47
Calving Interval (Days)	-8.83	47
Survival (%)	4.52	47
CALVING	40	53
Direct Calving Diff. (%)	2.30	50
Gestation Length (Days)	-3.48	60
BEEF	-4	44
MAINTENANCE	2	40
MANAGEMENT	3	20
HEALTH	-4	43



CLOCHRUA RADNEY LEVI (FR2232)

Genomic Proof

IE141894371549

FR 6%



YRY X RUU X GMI

Breeder: D. O'Leary, Cloghroe, Co. Cork

aAa: 324

a2a2 Milk



Sister- Clochrúa Alice 956 EX 3rd Lac.

ICBF DECEMBER 2016				Sub Index	
	€	Rel. %		€	Rel. %
EBI	265	51			
MILK	85	61	CALVING	45	63
Milk Kgs	+222	61	Direct Calving Diff. (%)	1.60	58
Fat	+14kgs	+0.09%	Gestation Length (Days)	-4.23	76
Protein	+14kgs	+0.11%	BEEF	-4	43
FERTILITY	135	47	MAINTENANCE	-5	41
Calving Interval (Days)	-6.07	47	MANAGEMENT	4	15
Survival (%)	4.95	47	HEALTH	4	44



- Easy Calving Sire That Is Suitable For Heifers
- Great Balance Between Milk Production & Fertility
- Excellent Health Traits of +€4
- Sister & Dam Classified Excellent

GORTGREEN SEBASTAIN (FR2314)

Genomic Proof

IE191098131990

FR 13%



JGC X KOZ X HTP

Breeder: D. Broderick, Listowel, Co. Kerry

aAa: 243



ICBF December 2016			Sub Index	
	€	Rel. %		
EBI	261	49		
MILK	89	60		
Milk Kgs	+238	60		
Fat	+17 Kgs,	+0.13%		
Protein	+14 Kgs,	+0.10%		
FERTILITY	114	45		
Calving Interval (Days)	-5.45	45		
Survival (%)	3.82	45		
CALVING	42	52		
Direct Calving Diff. (%)	1.60	49		
Gestation Length (Days)	-3.49	60		
BEEF	-2	41		
MAINTENANCE	7	39		
MANAGEMENT	5	17		
HEALTH	6	43		

- Fantastic Production with +238 Kgs of Milk
- +31Kgs of Milk Solids
- Super Health Sub Index of +€6
- Positive for Type Traits
- VG Dam Averaged 7,482Kgs Milk at 4.02% Fat & 3.71% Protein 1st 3 lactations with a Calving Interval of 363 Days

H
I
G
H
E
B
I
G
E
N
O
M
I
C
10



IE211299690969

FR 31%

GZY X FLT X KLX

**Breeder: J. Sheehan, Stoneyford,
Co. Kilkenny
aAa: 156**



- **GZY's Highest EBI Son €319**
- **A Breed Leader for Fertility with Sub Index of €207**
- **An Ideal A + B - C Milk Payment System Sire**
- **Great Balance Between Holstein & Friesian (31%) Genetics**
- **Positive for Health Sub Index (+€3)**



Stonecarthy FLT Aoife (Dam of FR2275)

Dam Calved with Twins & Produced in 2nd Lactation 8,588 Kgs of Milk at 3.94% of Fat & 3.63% of Protein

ICBF December 2016		Sub Index	
	€	Rel. %	
EBI	319	47	
MILK	87	57	
Milk Kgs	+39	57	
Fat	+19 Kgs, +0.29%	57	
Protein	+11 Kgs, +0.17%	57	
FERTILITY	207	45	
Calving Interval (Days)	-10.11	45	
Survival (%)	6.77	45	
CALVING	35	46	
Direct Calving Diff. (%)	2.70	47	
Gestation Length (Days)	-2.98	49	
BEEF	-1	44	
MAINTENANCE	-12	40	
MANAGEMENT	0	19	
HEALTH	3	42	

DOONMANAGH HMY MOSSY

(FJM)

Genomic Proof

IE191903370822

FR 6%



HMY X LFM X AXA

Breeder: J. Galvin, Lispole, Co. Kerry

aAa: 243



- Easy Calving Sire
- Short Gestation of -5.44 Days
- Great Balance Between Production & Fertility
- Positive for All Management Traits
- Available in Sexed Semen

ICBF December 2016		Sub Index	
	€	Rel. %	
EBI	228	62	
MILK	66	65	
Milk Kgs	+104	65	
Fat	+20 Kgs, +0.26%	65	
Protein	+8 Kgs, +0.09%	65	
FERTILITY	102	55	
Calving Interval (Days)	-4.98	55	
Survival (%)	3.36	55	
CALVING	55	91	
Direct Calving Diff. (%)	2.40	98	
Gestation Length (Days)	-5.44	99	
BEEF	-4	73	
MAINTENANCE	2	56	
MANAGEMENT	4	32	
HEALTH	3	52	

TISAXON DOUGIE (XTG)

Genomic Proof

IE141582022828

FR 16%



DGC X OJI X WGR

Breeder: J. O'Sullivan, Kinsale, Co. Cork

aAa: 423



- Easy Calving Sire That Is Suitable For Maiden Heifers
- Great Health & Fertility Sub Indexes
- VG Classified Dam
- Available in Sexed Semen

ICBF December 2016		Sub Index	
	€	Rel. %	
EBI	243	64	
MILK	61	74	
Milk Kgs	+96	74	
Fat	+13 Kgs, +0.15%	74	
Protein	+8 Kgs, +0.09%	74	
FERTILITY	139	60	
Calving Interval (Days)	-6.31	60	
Survival (%)	5.06	60	
CALVING	45	90	
Direct Calving Diff. (%)	2.10	96	
Gestation Length (Days)	-4.03	99	
BEEF	-1	51	
MAINTENANCE	-7	46	
MANAGEMENT	2	30	
HEALTH	5	57	

H
I
G
H

E
B
I

G
E
N
O
M
I
C

12

GADDAGH CUDDY REEKS (GZY)

Genomic Proof

IE191621460860

FR 16% 

LHZ X SOK X CBH

Breeder: V. O'Connor, Beaufort

Co. Kerry

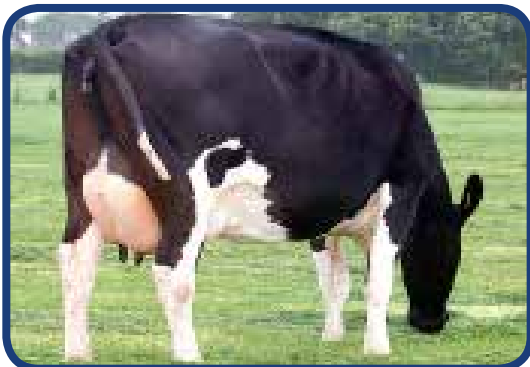
aAa: 243

a2a2 Milk



- 1st Incalf Daughters Look Outstanding
- Breed Leader for Fertility With Sub Index of +€163
- The Component Specialist, +0.26% of Fat & +0.19% of Protein

ICBF DECEMBER 2016			Sub Index		
	€	Rel. %		€	Rel. %
EBI	261	62			
MILK	81	65	CALVING	17	91
Milk Kgs	-37	65	Direct Calving Diff. (%)	3.10	99
Fat +14kgs	+0.26%	65	Gestation Length (Days)	-0.81	99
Protein +10kgs	+0.19%	65	BEEF	-14	88
FERTILITY	163	51	MAINTENANCE	10	59
Calving Interval (Days)	8.05	51	MANAGEMENT	0	32
Survival (%)	5.22	51	HEALTH	4	51



Gaddagh SOK Carmel (Dam of GZY)

Dam Averaged 1st 4 Lactations:
7,429Kgs of Milk at 4.31% of Fat & 3.71% of Protein with a 365 Day Calving Interval

FORTFERGUS ARTIC ORCA (TFZ) SRM

Genomic Proof

IE131358050963

FR 34% 

PBM X WGM X NEL

Breeder: T. Garry, Ennis, Co. Clare

aAa: N/A



- Great Balance Between Holstein & Friesian (34%) Genetics
- Impressive +37Kgs of Milk Solids
- Ideal Maintenance +€18 for Grass Based Systems
- Great Farmer Satisfaction with Young Stock

ICBF December 2016		Sub Index	
	€	Rel. %	
EBI	233	58	
MILK	103	66	
Milk Kgs	+183	66	
Fat	+23 Kgs, +0.26%	66	
Protein	+14 Kgs, +0.14%	66	
FERTILITY	103	48	
Calving Interval (Days)	-4.63	48	
Survival (%)	3.76	48	
CALVING	28	91	
Direct Calving Diff. (%)	2.60	98	
Gestation Length (Days)	-2.38	99	
BEEF	-22	52	
MAINTENANCE	18	47	
MANAGEMENT	5	30	
HEALTH	-1	50	

AGHAWADDA ARTHUR (AGH)

Genomic
Proof

IE141428941670

FR 19%



BQB X QUR X AXA

Breeder: J. Walsh, Timoleague, Co. Cork

aAa: 234

a2a2
Milk



Aghawadda Crocus VG 88 (Dam of AGH)

ICBF December 2016		Sub Index	
	€	Rel. %	
EBI	223	62	
MILK	89	64	
Milk Kgs	+157	64	
Fat	+15 Kgs, +0.14%	64	
Protein	+13 Kgs, +0.14%	64	
FERTILITY	104	52	
Calving Interval (Days)	-6.35	52	
Survival (%)	2.06	52	
CALVING	29	91	
Direct Calving Diff. (%)	4.20	99	
Gestation Length (Days)	-2.76	99	
BEEF	-13	82	
MAINTENANCE	8	58	
MANAGEMENT	6	32	
HEALTH	-1	49	

- **Outcross Bloodline**
- **Progeny have Strong Chest & Wide Rumps**
- **Great Production Sire with +28Kgs of Milk Solids**
- **Dam Averaged 1st 5 Lactations: 8,172 Kgs at 4.08% of Fat & 3.86% of Protein with a Calving Interval of 366 Days**

CURRA ROYAL LAURENCE (ZRL)

Genomic
Proof

IE351066121572

FR 25%



DGC X UYC X SPW

Breeder: K. Hearne, Carrick-on-Suir,

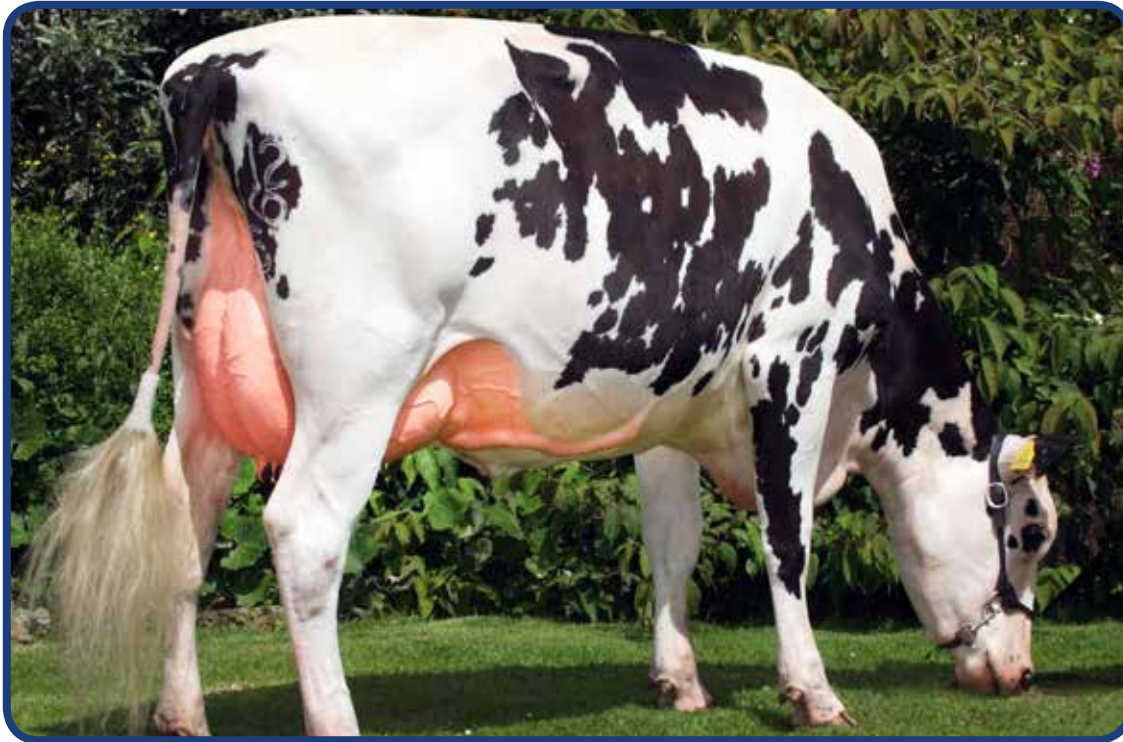
Waterford

aAa: 243



ICBF December 2016		Sub Index	
	€	Rel. %	
EBI	285	63	
MILK	49	71	
Milk Kgs	-69	71	
Fat	+7 Kgs, +0.17%	71	
Protein	+5 Kgs, +0.14%	71	
FERTILITY	198	57	
Calving Interval (Days)	-12.19	57	
Survival (%)	3.90	57	
CALVING	42	90	
Direct Calving Diff. (%)	3.00	96	
Gestation Length (Days)	-3.91	99	
BEEF	-21	54	
MAINTENANCE	17	48	
MANAGEMENT	-1	35	
HEALTH	0	56	

- **Improve your Fertility in ONE Cross with a Fertility Sub Index of +€198**
- **Transmits High Genomic EBI Progeny**
- **VG Dam Averaged over 12 Lactations: 6,357 Kgs of Milk at 4.68% of Fat & 4.11% of Protein with a 367 Day Calving Interval**



IE151289181395

Hol 97%

FR2028 x MWL x QUR

Breeder: H. O'Keefe, Freemount, Co. Cork

aAa: N/A



Radney Levi Odetta VG (Dam of FR4098)

**1st Lactation: 7,721Kgs of Milk,
4.05% of Fat, 3.79% of Protein,
305 Days, Calved at 1 Year 11 Months**

- **One of Ireland's Most Exciting New Sires**
- **From a Tremendous Cow Family – The Odetta's**
- **Dam VG 2 Years, Full Sister to YRY, Grand Dam EX93-7E**
- **Great Production Sire With +285 Kgs of Milk**
- **+31 Kgs of Milk Solids**
- **Positive for All Type Traits**
- **Outcross Bloodline**
- **Limited Semen Available for 2017**

ICBF December 2016		Sub Index
	€	Rel. %
EBI	288	51
MILK	94	64
Milk Kgs	+285	64
Fat	+15 Kgs, +0.05%	64
Protein	+16 Kgs, +0.10%	64
FERTILITY	148	50
Calving Interval (Days)	-7.62	50
Survival (%)	4.43	50
CALVING	50	46
Direct Calving Diff. (%)	1.60	46
Gestation Length (Days)	-4.54	48
BEEF	-3	38
MAINTENANCE	-7	36
MANAGEMENT	0	13
HEALTH	6	46



L to R: Radney QUR Odetta EX93 7E (Granddam), Radney MIW Odetta 2 EX92 4E, Radney DUT Odetta EX91 5E

IMLEACH CUDDY CLIVE**(FR2245) SRM****Genomic Proof****IE341365661586**

FR 22%

**GZY X BGJ X OJI**

Breeder: T. O'Meara, Emly, Co. Tipperary

aAa: 432

a2a2 Milk

ICBF DECEMBER 2016			Sub Index		
	€	Rel. %		€	Rel. %
EBI	259	48			
MILK	81	59	CALVING	39	53
Milk Kgs	-49	59	Direct Calving Diff. (%)	1.90	50
Fat +18kgs	+0.34%	59	Gestation Length (Days)	-3.18	60
Protein +9kgs	+0.19%	59	BEEF	-25	44
FERTILITY	145	43	MAINTENANCE	15	39
Calving Interval (Days)	-8.15	43	MANAGEMENT	4	15
Survival (%)	3.61	43	HEALTH	0	42

- Solids Specialist, +0.34% of Fat & +0.19% of Protein
- Ideal A + B – C Milk Payment System Sire
- Great Balance of Irish & New Zealand Genetics

GURTATREA JR EVEREST**(JRE)****Genomic Proof****IE141887911062**

FR 13%

**LHZ X CBH X LOO**

Breeder: W. Casey, Berrings, Co. Cork

aAa: 243



ICBF DECEMBER 2016			Sub Index		
	€	Rel. %		€	Rel. %
EBI	207	63			
MILK	70	67	CALVING	29	91
Milk Kgs	+118	67	Direct Calving Diff. (%)	2.40	99
Fat +13kgs	+0.13%	67	Gestation Length (Days)	-2.14	99
Protein +10kgs	+0.11%	67	BEEF	-16	75
FERTILITY	110	54	MAINTENANCE	17	56
Calving Interval (Days)	-4.87	54	MANAGEMENT	-2	33
Survival (%)	4.13	54	HEALTH	-1	52

Gurtatrea CBH Angela VG87 (Dam of JRE)

- Outcross Bloodline
- No Oman (OJI), Hugo (YRC) or Keet (BWZ) in Pedigree
- Daughters have Great Strength

CASTLEBLAGH RUTHLESS**(FZC)****Genomic Proof****IE151569290996**

FR 6%

**LHZ X BWZ X NHS**

Breeder: T. Beecher, Ballyhooly, Co. Cork

aAa: 135



ICBF DECEMBER 2016			Sub Index		
	€	Rel. %		€	Rel. %
EBI	206	65			
MILK	61	72	CALVING	40	91
Milk Kgs	+49	72	Direct Calving Diff. (%)	3.10	97
Fat +11kgs	+0.16%	72	Gestation Length (Days)	-3.54	99
Protein +8kgs	+0.11%	72	BEEF	-9	55
FERTILITY	98	59	MAINTENANCE	7	51
Calving Interval (Days)	-4.68	59	MANAGEMENT	0	40
Survival (%)	3.31	59	HEALTH	9	57

Castleblagh Keet Ruth EX90 (Dam of FZC)

- 1st Milking Daughters Due This Spring Look Outstanding
- +€9 for Health Sub Index (Cell Count Improver)
- Dam & Granddam Classified Excellent

H
I
G
H

E
B
I

G
E
N
O
M
I
C

16

BROWNEY PSZ STATION**(FR2273) SRM***Genomic Proof***IE151604991299**

FR 25%

**PSZ X BHZ X GIO**

Breeder: T. Kearney, Rathcormac, Co. Cork

aAa: 243

**Browney BHZ Kathy (Dam of FR2273)**

ICBF DECEMBER 2016			Sub Index		
	€	Rel. %		€	Rel. %
EBI	286	56			
MILK	78	68	CALVING	50	54
Milk Kgs	+52	68	Direct Calving Diff. (%)	1.80	51
Fat +15kgs	+0.22%	68	Gestation Length (Days)	-4.51	60
Protein +10kgs	+0.15%	68	BEEF	-9	46
FERTILITY	152	54	MAINTENANCE	18	42
Calving Interval (Days)	-7.89	54	MANAGEMENT	0	28
Survival (%)	4.45	54	HEALTH	-4	51

- **Great Balance Between Friesian & Holstein Genetics**
- **High Fertility Sub Index of +€152**
- **Short Gestation Sire (-4.51 Days)**
- **4 Generations of Proven Bloodlines**

CARNVIEW PSZ ALPHA 1333**(FR2315)***Genomic Proof***IE351293131333**

FR 19%

**PSZ X MJI X BWZ**

Breeder: T. Keevers, Clashmore, Co. Waterford

aAa: 351

**Carnview MJI Alpha (Dam of FR2315)**

ICBF DECEMBER 2016			Sub Index		
	€	Rel. %		€	Rel. %
EBI	252	57			
MILK	78	70	CALVING	51	54
Milk Kgs	+129	70	Direct Calving Diff. (%)	1.60	50
Fat +15kgs	+0.17%	70	Gestation Length (Days)	-4.70	60
Protein +11kgs	+0.12%	70	BEEF	-14	46
FERTILITY	132	56	MAINTENANCE	10	42
Calving Interval (Days)	-6.80	56	MANAGEMENT	-3	30
Survival (%)	3.96	56	HEALTH	-1	53

- **Massive Fertility Sub Index of €132**
- **Short Gestation Sire (-4.70 Days)**
- **Milk Solids Improver**
- **Bred from an Outstanding MJI Dam**

AUGHNAGERAGH BEN**(FR2277)***Genomic Proof***IE371197880695**

FR 16%

**PSZ X RUU X NHS**

Breeder: B. O'Gorman, Taghmon, Co. Wexford

aAa: 234

a2a2 Milk

ICBF DECEMBER 2016			Sub Index		
	€	Rel. %		€	Rel. %
EBI	251	60			
MILK	80	73	CALVING	36	55
Milk Kgs	+18	73	Direct Calving Diff. (%)	2.60	51
Fat +13kgs	+0.20%	73	Gestation Length (Days)	-3.09	61
Protein +10kgs	+0.17%	73	BEEF	-7	47
FERTILITY	137	59	MAINTENANCE	5	43
Calving Interval (Days)	-7.65	59	MANAGEMENT	-1	33
Survival (%)	3.52	59	HEALTH	1	55

- **Outcross Bloodline, No Oman (OJI) or Hugo (UYC) in Pedigree**
- **Top Cow Family for Production, High Solids & Fertility**

H**I****G****H****E****B****I****G****E****N****O****M****I****C****17**

HAGGARD FRANKO (FR4154)

Genomic Proof

IE371015352211

FR 16%



SEW X PSZ X PKK

Breeder: M. Murphy, Ramsgrange, Co. Wexford

aAa: N/A

a2a2 Milk



- New High EBI SEW Son
- +33 Kgs of Milk Solids
- Terrific Sub Index for Fertility €179
- Very Limited Semen for 2017

ICBF DECEMBER 2016			Sub Index		
	€	Rel. %		€	Rel. %
EBI	307	39			
MILK	81	48	CALVING	53	53
Milk Kgs	+148	48	Direct Calving Diff. (%)	1.60	50
Fat	+22kgs	+0.27%	Gestation Length (Days)	-4.84	60
Protein	+11kgs	+0.10%	BEEF	-20	43
FERTILITY	179	31	MAINTENANCE	10	38
Calving Interval (Days)	-9.86	31	MANAGEMENT	3	14
Survival (%)	4.66	31	HEALTH	2	32

HANRAHAN ROYALTY (FR4123)

Genomic Proof

IE151519150817

FR 12%



ZRL X ZTG X MXZ

Breeder: E. Hanrahan, Mitchelstown, Co. Cork

aAa: N/A



- High EBI ZRL Son
- Total Outcross Pedigree
- Extreme Values for Fertility & Health
- Positive for All Type Traits
- Very Limited Semen for 2017

ICBF DECEMBER 2016			Sub Index		
	€	Rel. %		€	Rel. %
EBI	311	45			
MILK	81	56	CALVING	49	52
Milk Kgs	+89	56	Direct Calving Diff. (%)	2.40	50
Fat	+13kgs	+0.16%	Gestation Length (Days)	-4.68	60
Protein	+11kgs	+0.15%	BEEF	-14	39
FERTILITY	181	41	MAINTENANCE	5	36
Calving Interval (Days)	-9.30	41	MANAGEMENT	0	15
Survival (%)	5.47	41	HEALTH	8	40

BALLYGOWN SEW TYLER (FR4101)

Genomic Proof

IE211058451355

FR 22%



SEW X DGC X GVV

Breeder: S. Knox, Pilltown, Co. Kilkenny

aAa: N/A



- Excellent Milk Figure Of +205 Kgs Milk
- Positive for All Management Traits
- Dam is One of DGC's Best Daughters
- Very Limited Semen for 2017

ICBF DECEMBER 2016			Sub Index		
	€	Rel. %		€	Rel. %
EBI	316	51			
MILK	74	65	CALVING	52	46
Milk Kgs	+205	65	Direct Calving Diff. (%)	1.60	49
Fat	+18kgs	+0.16%	Gestation Length (Days)	-4.83	46
Protein	+11kgs	+0.07%	BEEF	-17	43
FERTILITY	190	50	MAINTENANCE	13	38
Calving Interval (Days)	-9.07	50	MANAGEMENT	0	15
Survival (%)	6.42	50	HEALTH	4	47

H
I
G
H

E
B
I

G
E
N
O
M
I
C

RONNOCO VIEW

(FR4099)

Genomic Proof

IE151555651310

FR 28%

LWR X PSZ X UYC

Breeder: C. O'Connor, Glanworth, Co. Cork

aAa: N/A

a2a2 Milk



ICBF December 2016		Sub Index
	€	Rel. %
EBI	322	52
MILK	120	66
Milk Kgs	+84	66
Fat	+19 Kgs, +0.27%	66
Protein	+16 Kgs, +0.23%	66
FERTILITY	154	50
Calving Interval (Days)	-7.25	50
Survival (%)	5.35	50
CALVING	52	53
Direct Calving Diff. (%)	2.10	50
Gestation Length (Days)	-4.84	60
BEEF	-20	39
MAINTENANCE	13	37
MANAGEMENT	1	16
HEALTH	2	47

- A New Superstar for Dovea Genetics with EBI of €322
- Incredible Sub Indexes For Milk €120 And Fertility €154
- +35 Kgs of Milk Solids
- +0.27% of Fat & +0.23% of Protein
- Outcross Bloodline, No Oman (OJI)
- Very Limited Semen for 2017

PARKDUF FALCON

(FR4100)

Genomic Proof

IE151013722040

FR 22%



ZRL X SOK X RUU

Breeder: K. Downing, Whitechurch, Co. Cork

aAa: N/A



Parkdub Margo 51 VG88 (Dam of FR4100)

ICBF December 2016		Sub Index
	€	Rel. %
EBI	328	49
MILK	77	60
Milk Kgs	+189	60
Fat	+12 Kgs, +0.07%	60
Protein	+12 Kgs, +0.10%	60
FERTILITY	198	46
Calving Interval (Days)	-10.91	46
Survival (%)	5.23	46
CALVING	47	53
Direct Calving Diff. (%)	1.60	50
Gestation Length (Days)	-3.86	60
BEEF	-7	40
MAINTENANCE	2	38
MANAGEMENT	5	19
HEALTH	7	44

- One of the Highest Pedigree EBI Sires Available at €328
- Cow Family Renowned for Longevity & Production
- Extreme Scores for Fertility & Health
- VG88 Dam Produced 713 Kgs of Solids in her 3rd Lactation
- Granddam is Full Sister to PKK
- Very Limited Semen for 2017

H
I
G
H
E
B
I
G
E
N
O
M
I
C
19

RUSTYSHERD RUSTY (FR4132)

Genomic Proof

IE371003481079

FR 22%



LWR X MJI X HZO

Breeder: J. Barden, New Ross, Co. Wexford

aAa: N/A

a2a2 Milk



Rustysherd Pearl 704 (Dam of FR4132)

ICBF DECEMBER 2016			Sub Index		
	€	Rel. %		€	Rel. %
EBI	303	45			
MILK	100	56	CALVING	37	42
Milk Kgs	+226	56	Direct Calving Diff. (%)	1.60	50
Fat +16kgs	+0.11%	56	Gestation Length (Days)	-3.50	60
Protein +16kgs	+0.14%	56	BEEF	-10	39
FERTILITY	149	40	MAINTENANCE	7	38
Calving Interval (Days)	-6.87	40	MANAGEMENT	3	19
Survival (%)	5.33	40	HEALTH	11	39

- High EBI LWR Son of €303
- Great Balance Between Milk Sub Index of €100 & Fertility Sub Index of €149
- A Breed Leader for Health Sub Index of +€11
- Dam is Maternal Sister to FR2012
- Very Limited Semen for 2017

ISLANDBOY BUNWORTH (FR4102) SRM

Genomic Proof

IE191116282242

FR 25%



SEW X MSF X AYW

Breeder: P. O'Connor, Abbeyfeale,

Co. Limerick

aAa: N/A

a2a2 Milk



ICBF DECEMBER 2016			Sub Index		
	€	Rel. %		€	Rel. %
EBI	285	46			
MILK	113	57	CALVING	51	46
Milk Kgs	+120	57	Direct Calving Diff. (%)	1.60	49
Fat +18kgs	+0.23%	57	Gestation Length (Days)	-4.84	46
Protein +16kgs	+0.20%	57	BEEF	-23	43
FERTILITY	119	42	MAINTENANCE	23	39
Calving Interval (Days)	-6.17	42	MANAGEMENT	1	16
Survival (%)	3.56	42	HEALTH	1	39

- +34 Kgs of Milk Solids & +0.20% of Protein
- Great Combination of Irish & New Zealand Genetics
- Maintenance Sub Index +€23
- A Sire that Ticks All the Boxes
- Very Limited Semen for 2017

ROSSBANE LEO 1112 (FR4103)

Genomic Proof

IE241418291112

FR 12%



SEW X DSU X OJI

Breeder: T. O Carroll, Killmallock,

Co. Limerick

aAa: N/A



ICBF DECEMBER 2016			Sub Index		
	€	Rel. %		€	Rel. %
EBI	297	45			
MILK	105	54	CALVING	52	53
Milk Kgs	+110	54	Direct Calving Diff. (%)	1.80	50
Fat +22kgs	+0.30%	54	Gestation Length (Days)	-4.84	60
Protein +14kgs	+0.18%	54	BEEF	-12	43
FERTILITY	142	39	MAINTENANCE	5	39
Calving Interval (Days)	-6.92	39	MANAGEMENT	1	15
Survival (%)	4.63	39	HEALTH	3	38

- High Production Sub Index +€105
- +0.30% of Fat & +0.18% of Protein
- Excellent Fertility Sub Index €142
- Short Gestation (- 4.84 Days) Sire
- Very Limited Semen for 2017

H
I
G
H
E
B
I
G
E
N
O
M
I
C
20

BALLYOGAHA PHILIP (ZPB)

Daughter Proven

IE151653460894

FR 22%

**SOK X GYK X AAP**

Breeder: P. Tobin, Ballincurrig, Co. Cork

aAa: 423



Browney ZPB Jade (ZPB Daughter)

- **Very Easy Calving Daughter Proven Sire Suitable For Maiden Heifers**
- **+23 Kgs Of Milk Solids**
- **+0.22% Of Fat & +0.17% Of Protein**
- **Short Gestation Sire At -4.85 Days (99% Rel.)**
- **Positive For All Type Traits**
- **Outstanding Feet & Legs +1.41**

ICBF December 2016		Sub Index	
	€	Rel. %	
EBI	203	90	
MILK	76	99	
Milk Kgs	-1	99	
Fat	+13 Kgs, +0.22%	99	
Protein	+10 Kgs, +0.17%	99	
FERTILITY	71	81	
Calving Interval (Days)	-3.78	81	
Survival (%)	1.96	81	
CALVING	52	98	
Direct Calving Diff. (%)	1.80	99	
Gestation Length (Days)	-4.85	99	
BEEF	-3	97	
MAINTENANCE	-8	81	
MANAGEMENT	11	85	
HEALTH	5	86	

DEANS GROVE ARGENT (AZG) SRM

Daughter Proven

IE341476090526

FR 28%

**HZS X BWS X GMI**

Breeder: M. Ryan, Cashel, Co. Tipperary

aAa: N/A



- **One Of Ireland's Highest EBI Daughter Proven Sires (EBI Of €237)**
- **Very Easy Calving Suitable For Small Maiden Heifers**
- **Tremendous Component Improver Of +0.33% Fat & +0.19% Protein**

ICBF December 2016		Sub Index	
	€	Rel. %	
EBI	237	70	
MILK	73	79	
Milk Kgs	-83	79	
Fat	+15 Kgs, +0.33%	79	
Protein	+8 Kgs, +0.19%	79	
FERTILITY	106	59	
Calving Interval (Days)	-4.96	59	
Survival (%)	3.68	59	
CALVING	48	86	
Direct Calving Diff. (%)	1.10	86	
Gestation Length (Days)	-4.37	95	
BEEF	-13	83	
MAINTENANCE	17	59	
MANAGEMENT	10	57	
HEALTH	-3	51	

DOONMANAGH DSU BOWSER**(DBW)****Daughter Proven****IE191903320743**

FR 25%

**DSU X DEU X EZF**

Breeder: J. Galvin, Lispole, Co. Kerry

aAa: N/A

a2a2 Milk**Doonmanagh DEU Cherry EX (Dam of DBW)**

- Massive Daughter Proven Fertility Sub Index of €134
- Great Component Improver
- Positive for Health Sub Index of +€2

ICBF DECEMBER 2016			Sub Index		
	€	Rel. %		€	Rel. %
EBI	235	77			
MILK	61	90	CALVING	35	94
Milk Kgs	-123	90	Direct Calving Diff. (%)	4.50	99
Fat +13kgs	+0.32%	90	Gestation Length (Days)	-3.54	99
Protein +6kgs	+0.18%	90	BEEF	-2	91
FERTILITY	134	63	MAINTENANCE	5	61
Calving Interval (Days)	-7.68	63	MANAGEMENT	1	61
Survival (%)	3.24	63	HEALTH	2	65

DUNGOURNEY CREMIN**(DGC)****Daughter Proven****IE151706421473**

FR 22%

**IRP X HFL X GMI**

Breeder: J. & A. Flynn, Dungourney, Co. Cork

aAa: 243

**Shanakilla Festival Carmel (Dam of DGC)**

- Great Reports From His Milking Daughters
- High Reliable Sire With Over 2,000 Milking Daughters
- Breeds Medium Sizes Cows
- Very Good Udders With Excellent Temperament

ICBF DECEMBER 2016			Sub Index		
	€	Rel. %		€	Rel. %
EBI	159	91			
MILK	43	99	CALVING	42	98
Milk Kgs	+74	99	Direct Calving Diff. (%)	2.30	99
Fat +10kgs	+0.12%	99	Gestation Length (Days)	-3.61	99
Protein +6kgs	+0.06%	99	BEEF	-15	98
FERTILITY	95	84	MAINTENANCE	2	87
Calving Interval (Days)	-3.92	84	MANAGEMENT	-2	85
Survival (%)	3.82	84	HEALTH	2	83

LACKCASTLE KENNY**(KYD)****Daughter Proven****IE141565611134**

FR 28%

**MXK X UYC X CVE**

Breeder: J. Mahony, Bandon, Co. Cork

aAa: 264

a2a2 Milk

- Outcross Sire
- Jersey Like Percentages +0.43% of Fat, +0.19% of Protein
- Ideal Maintenance Score of +€23
- Health Sub Index of +€5

ICBF DECEMBER 2016			Sub Index		
	€	Rel. %		€	Rel. %
EBI	219	67			
MILK	75	81	CALVING	29	92
Milk Kgs	-127	81	Direct Calving Diff. (%)	3.00	99
Fat +19kgs	+0.43%	81	Gestation Length (Days)	-2.84	99
Protein +7kgs	+0.19%	81	BEEF	-15	86
FERTILITY	99	51	MAINTENANCE	23	57
Calving Interval (Days)	-4.26	51	MANAGEMENT	2	34
Survival (%)	3.86	51	HEALTH	5	54

PIMORIN

(PIM)

Daughter Proven

HOLFRAM003536863448

HAIRY BREIZ X E. CASH X MOUNTAIN

aAa: 135



- One of Ireland's Most Popular Daughter Proven Sires
- Outcross Bloodline, No Oman (OJI)
- Excellent Production Sire
- +€4 for Health Sub Index
- Excellent Udders

ICBF December 2016		Sub Index	
	€	Rel. %	
EBI	127	95	
MILK	48	99	
Milk Kgs	+293	99	
Fat	+8 Kgs, -0.06%	99	
Protein	+10 Kgs, +0.00%	99	
FERTILITY	42	91	
Calving Interval (Days)	-1.92	91	
Survival (%)	1.50	91	
CALVING	33	99	
Direct Calving Diff. (%)	3.10	99	
Gestation Length (Days)	-2.89	99	
BEEF	-12	99	
MAINTENANCE	12	95	
MANAGEMENT	1	93	
HEALTH	4	90	

Linear Trait Profile: ICBF Dec. 2016

		-3	-2	-1	0	1	2	3		
Overall Type	Poor	[Bar chart showing poor performance]							Excellent	+0.98
Overall Udder	Poor	[Bar chart showing poor performance]							Excellent	+1.17
Feet & Legs	Poor	[Bar chart showing poor performance]							Excellent	+0.11

CO-OP BOSSIDE MASSEY

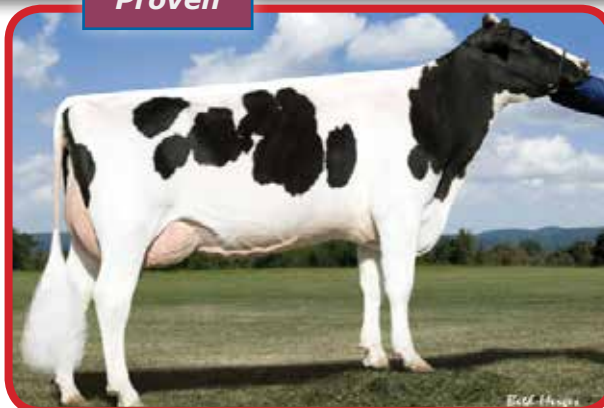
(S1383)

Daughter Proven

HOLUSAM000063026939

MASCOL X BRET X MANFRED

aAa: 453



- Great Irish Daughter Proof
- Over 10,000 Daughters Milking Worldwide
- Breeds Medium Stature Cows With Strong Chest Width & Wide Rumps
- Excels on Milking Speed
- Transmits Super Udders
- Impressive Health Sub Index of +€10



a2a2 Milk

ICBF December 2016		Sub Index	
	€	Rel. %	
EBI	105	85	
MILK	55	91	
Milk Kgs	+363	91	
Fat	+11 Kgs, -0.05%	91	
Protein	+11 Kgs, -0.01%	91	
FERTILITY	14	91	
Calving Interval (Days)	1.25	91	
Survival (%)	2.45	91	
CALVING	31	89	
Direct Calving Diff. (%)	3.40	94	
Gestation Length (Days)	-2.73	97	
BEEF	13	78	
MAINTENANCE	-18	56	
MANAGEMENT	-1	51	
HEALTH	10	79	

Linear Trait Profile: ICBF Dec. 2016

		-3	-2	-1	0	1	2	3		
Overall Type	Poor	[Bar chart showing poor performance]							Excellent	+2.34
Overall Udder	Poor	[Bar chart showing poor performance]							Excellent	+2.46
Feet & Legs	Poor	[Bar chart showing poor performance]							Excellent	+1.07

D
A
U
G
H
T
E
R
P
R
O
V
E
N
E
B
I
23

LASSE P (S2013)

Daughter Proven

REDDEUM000662992189
LAWN BOY X STADEL CLASSIC X ORIGIN



aAa: 423

ICBF DECEMBER 2016				Sub Index	
	€	Rel. %		€	Rel. %
EBI	68	66			
MILK	51	70	CALVING	25	81
Milk Kgs	+307	70	Direct Calving Diff. (%)	2.97	88
Fat	+11kgs	-0.01%	Gestation Length (Days)	-1.83	90
Protein	+10kgs	-0.01%	BEEF	-6	50
FERTILITY	-10	71	MAINTENANCE	2	44
Calving Interval (Days)	1.75	71	MANAGEMENT	2	17
Survival (%)	0.97	71	HEALTH	4	64



- High Volume Red Holstein Polled Sire (+307 Kgs Milk)
- Transmits Fantastic Rump Width & Correct Pin Setting
- Breeds Cows of Moderate Stature with Outstanding Feet & Legs

Linear Trait Profile: ICBF Dec. 2016

		-3	-2	-1	0	1	2	3		
Overall Type	Poor								Excellent	+1.79
Overall Udder	Poor								Excellent	+1.15
Feet & Legs	Poor								Excellent	+2.11

LYNBROOK OMAN CLASSIC (LCK)

Daughter Proven

IE191911970431

OMAN X MANAT X BASAR



Breeder: J. Cunnane, Ballyhaunis, Co. Mayo

aAa: 231



ICBF DECEMBER 2016				Sub Index	
	€	Rel. %		€	Rel. %
EBI	133	97			
MILK	80	99	CALVING	43	99
Milk Kgs	+452	99	Direct Calving Diff. (%)	2.00	99
Fat	+20kgs	+0.04%	Gestation Length (Days)	-3.70	99
Protein	+15kgs	-0.01%	BEEF	-5	99
FERTILITY	14	95	MAINTENANCE	-8	96
Calving Interval (Days)	0.09	95	MANAGEMENT	2	94
Survival (%)	1.23	95	HEALTH	7	92



EX Classified LCK Daughter

- Phenomenal +35Kgs Of Milk Solids
- Easy Calving Daughter Proven Sire Suitable For Maiden Heifers
- 8 Excellent Classified Daughters In His Test Proof
- Classic Delivers Production, Type & Health Traits All In One Package

WILRA BOLIVER SEQUOIA (S2019)

Daughter Proven

HOLUSAM000064188829

BOLIVER X RAMOS X ADDISON



aAa: 561

ICBF DECEMBER 2016				Sub Index	
	€	Rel. %		€	Rel. %
EBI	22	70			
MILK	23	73	CALVING	30	84
Milk Kgs	+221	73	Direct Calving Diff. (%)	3.02	91
Fat	+2kgs	-0.11%	Gestation Length (Days)	-2.79	95
Protein	+6kgs	-0.02%	BEEF	3	71
FERTILITY	-39	72	MAINTENANCE	-3	45
Calving Interval (Days)	3.13	72	MANAGEMENT	1	28
Survival (%)	0.01	72	HEALTH	7	65



- A Total Outcross for Many Dairy Herds
- Combines Production with Type
- Well Attached Udders with Excellent Teat Placement
- Interesting aAa Figures of 561
- Available in Sexed Semen

Linear Trait Profile: ICBF Dec. 2016

		-3	-2	-1	0	1	2	3		
Overall Type	Poor								Excellent	+1.44
Overall Udder	Poor								Excellent	+1.86
Feet & Legs	Poor								Excellent	-0.11

CO-OP JET STREAM ARMY

(S1599)

Daughter Proven

HOLUSAM000063285292

JET STREAM X MARSHALL X RUDOLPH

aAa: 243



- Impressive Reports From His Irish Milking Daughters
- Interesting Outcross Sire With No Oman, Shottle Or Goldwyn
- Transmits Snugly Attached Udders
- High Reliability (5,500 Daughters In Production Proof)
- Available in Sexed Semen

ICBF December 2016		Sub Index	
	€	Rel. %	
EBI	101	75	
MILK	47	74	
Milk Kgs	+312	74	
Fat	+10 Kgs, -0.03%	74	
Protein	+10 Kgs, -0.02%	74	
FERTILITY	19	85	
Calving Interval (Days)	-0.97	85	
Survival (%)	0.54	85	
CALVING	43	89	
Direct Calving Diff. (%)	3.20	97	
Gestation Length (Days)	-4.42	99	
BEEF	6	73	
MAINTENANCE	-12	49	
MANAGEMENT	-3	16	
HEALTH	1	63	

Linear Trait Profile: ICBF Dec. 2016

		-3	-2	-1	0	1	2	3		
Overall Type	Poor				■			Excellent		+2.31
Overall Udder	Poor				■			Excellent		+2.10
Feet & Legs	Poor				■			Excellent		+1.49

LOCKER-LANE RW BANNING

(S2189)

Daughter Proven

HOLUSAM000139819313

NIFTY X SHOTTLE X FORBIDDEN

aAa: 321



- Outcross Bloodline
- Superb All Round Sire
- Excellent Production Sire
- Breeds Strong Robust Cows With Good Udders

ICBF December 2016		Sub Index	
	€	Rel. %	
EBI	93	71	
MILK	32	75	
Milk Kgs	+152	75	
Fat	+12 Kgs, +0.10%	75	
Protein	+5 Kgs, +0.00%	75	
FERTILITY	44	84	
Calving Interval (Days)	-1.21	84	
Survival (%)	2.42	84	
CALVING	16	80	
Direct Calving Diff. (%)	3.21	90	
Gestation Length (Days)	-0.75	92	
BEEF	-5	43	
MAINTENANCE	3	41	
MANAGEMENT	2	15	
HEALTH	1	62	

Linear Trait Profile: ICBF Dec. 2016

		-3	-2	-1	0	1	2	3		
Overall Type	Poor				■			Excellent		+1.44
Overall Udder	Poor				■			Excellent		+1.07
Feet & Legs	Poor				■			Excellent		+1.56

D
A
U
G
H
T
E
R

P
R
O
V
E
N

E
B
I
25

MR. EDG JAMMING 57554 (FR2287) RF

Genomic Proof

HOL840M003010356301
JEROD X SHAMROCK X GOLDWYN
aAa: 243



ICBF DECEMBER 2016				Sub Index	
	€	Rel. %		€	Rel. %
EBI	167	50			
MILK	51	68	CALVING	37	12
Milk Kgs	+383	68	Direct Calving Diff. (%)	2.60	14
Fat +12kgs	-0.06%	68	Gestation Length (Days)	-3.21	12
Protein +11kgs	-0.03%	68	BEEF	0	35
FERTILITY	88	56	MAINTENANCE	-15	33
Calving Interval (Days)	-3.47	56	MANAGEMENT	0	7
Survival (%)	3.70	56	HEALTH	7	49

Linear Trait Profile: ICBF Dec. 2016										
		-3	-2	-1	0	1	2	3		
Overall Type	Poor	[Bar chart]						Excellent	+2.69	
Overall Udder	Poor	[Bar chart]						Excellent	+3.40	
Feet & Legs	Poor	[Bar chart]						Excellent	+2.83	

- Outstanding Total Package of Production, Type & Fertility
- From the Barbie Cow Family
- Breeding the Next Generation Genetics
- Tremendous Linear (+3.40 for Udders)
- 1st Born Calves are Very Fancy

MANDELLA (\$2296)

Genomic Proof

HOLNLDM000916344441
MOGUL X SUPERSTITION X SHOTTLE
aAa: 153



ICBF DECEMBER 2016				Sub Index	
	€	Rel. %		€	Rel. %
EBI	138	59			
MILK	43	70	CALVING	30	76
Milk Kgs	+233	70	Direct Calving Diff. (%)	3.50	77
Fat +11kgs	+0.02%	70	Gestation Length (Days)	-2.87	88
Protein +8kgs	+0.00%	70	BEEF	1	41
FERTILITY	61	59	MAINTENANCE	-5	37
Calving Interval (Days)	-1.63	59	MANAGEMENT	2	9
Survival (%)	3.40	59	HEALTH	4	54

Linear Trait Profile: ICBF Dec. 2016										
		-3	-2	-1	0	1	2	3		
Overall Type	Poor	[Bar chart]						Excellent	+1.93	
Overall Udder	Poor	[Bar chart]						Excellent	+1.31	
Feet & Legs	Poor	[Bar chart]						Excellent	+1.98	

- Great Sire Stack Of Mogul x Superstition x Shottle
- From the High Protein Froukje Cow Family
- Type Improver Without Increasing Stature
- Recommended for Robot Milking Systems

CO-OP ROBUST JITTERBUG (FR2250)

Daughter Proven

HOLUSAM000070541469
ROBUST X RAMOS X P.MTOTO
aAa: 354



ICBF DECEMBER 2016				Sub Index	
	€	Rel. %		€	Rel. %
EBI	81	57			
MILK	28	71	CALVING	37	33
Milk Kgs	+200	71	Direct Calving Diff. (%)	1.31	68
Fat +13kgs	+0.08%	71	Gestation Length (Days)	-2.85	17
Protein +5kgs	-0.03%	71	BEEF	1	37
FERTILITY	14	64	MAINTENANCE	-7	36
Calving Interval (Days)	0.76	64	MANAGEMENT	2	15
Survival (%)	1.97	64	HEALTH	5	55

Linear Trait Profile: ICBF Dec. 2016										
		-3	-2	-1	0	1	2	3		
Overall Type	Poor	[Bar chart]						Excellent	+2.00	
Overall Udder	Poor	[Bar chart]						Excellent	+1.78	
Feet & Legs	Poor	[Bar chart]						Excellent	+1.32	

- Daughter Proven Outcross Sire from USA
- Very Easy Calving Sire That Is Suitable for Maiden Heifers
- Sires Medium Sized Cows with Well Attached Udders
- Ideal Rear Leg Set with Excellent Locomotion

JERUDO**(JUX)****Daughter
Proven****REDDEUM000113878473****JEROM X RUDOLPH X VALIANT TAB****aAa: 564****a2a2
Milk**

ICBF December 2016		Sub Index	
	€	Rel. %	
EBI	82	96	
MILK	59	99	
Milk Kgs	+338	99	
Fat	+13 Kgs, -0.01%	99	
Protein	+12 Kgs, +0.00%	99	
FERTILITY	-1	96	
Calving Interval (Days)	0.63	96	
Survival (%)	0.58	96	
CALVING	24	98	
Direct Calving Diff. (%)	3.40	99	
Gestation Length (Days)	-2.19	99	
BEEF	2	98	
MAINTENANCE	-12	91	
MANAGEMENT	3	85	
HEALTH	5	90	



- +25Kgs of Milk Solids (99% Rel.)
- Breeds Strong Chests with Wide Rumps, Negative for Angularity
- Great Farmer Satisfaction with Irish Milking Daughters
- Attractive aAa Figures of 564

INTERSTICE**(S2304)****Genomic
Proof****HOLFRAM004441361370****MASSEY X ALTAROSS X SHOTTLE****aAa: 423**

ICBF December 2016		Sub Index	
	€	Rel. %	
EBI	172	61	
MILK	45	73	
Milk Kgs	+270	73	
Fat	+10 Kgs, -0.01%	73	
Protein	+9 Kgs, +0.00%	73	
FERTILITY	68	62	
Calving Interval (Days)	-1.92	62	
Survival (%)	3.67	62	
CALVING	45	69	
Direct Calving Diff. (%)	3.10	73	
Gestation Length (Days)	-4.25	85	
BEEF	10	42	
MAINTENANCE	-10	38	
MANAGEMENT	2	19	
HEALTH	13	56	



- High EBI Massey Son
- Will Transmit Consistently Good Udders with Excellent Legs & Feet
- Excellent Cell Count Improver
- +€13 for Health Sub Index
- Bred From a Great Cow Family in France

Linear Trait Profile: ICBF Dec. 2016

		-3	-2	-1	0	1	2	3		
Overall Type	Poor	[Progressive Bar]						Excellent	+2.42	
Overall Udder	Poor	[Progressive Bar]						Excellent	+2.41	
Feet & Legs	Poor	[Progressive Bar]						Excellent	+2.39	

**D
A
U
G
H
T
E
R

P
R
O
V
E
N

E
B
I
27**

DE-SU FREDDIE DENIM 646 (S1622)

Daughter Proven

HOLUSAM000068656227
FREDDIE X WIZARD X P.MTOTO
 aAa: 342 **a2a2 Milk**



ICBF DECEMBER 2016				Sub Index	
	€	Rel. %		€	Rel. %
EBI	137	67			
MILK	52	77	CALVING	37	81
Milk Kgs	+336	77	Direct Calving Diff. (%)	2.26	92
Fat	+15kgs	+0.03%	77	Gestation Length (Days)	-3.51
Protein	+10kgs	-0.02%	77	BEEF	-1
FERTILITY	39	75	MAINTENANCE	-2	23
Calving Interval (Days)	-0.85	75	MANAGEMENT	2	16
Survival (%)	2.35	75	HEALTH	10	67

- High Reliable US Daughter Proven Sire With 7,700 Daughters In 1,200 Herds
- Holstein Genetics With Pure Friesian Type Traits
- Positive For Teat Length
- Recommended For Robot Milking Systems

Linear Trait Profile: ICBF Dec. 2016									
		-3	-2	-1	0	1	2	3	
Overall Type	Poor								Excellent +1.06
Overall Udder	Poor								Excellent +1.03
Feet & Legs	Poor								Excellent +0.49

CARLINO (FR2318)

Genomic Proof

HOLUSAM000071906169
MAURICE X ROBUST X PLANET
 aAa: 435



ICBF DECEMBER 2016				Sub Index	
	€	Rel. %		€	Rel. %
EBI	140	52			
MILK	67	68	CALVING	33	29
Milk Kgs	+320	68	Direct Calving Diff. (%)	2.68	62
Fat	+19kgs	+0.10%	68	Gestation Length (Days)	-2.73
Protein	+11kgs	+0.01%	68	BEEF	6
FERTILITY	36	57	MAINTENANCE	-7	33
Calving Interval (Days)	-0.05	57	MANAGEMENT	0	8
Survival (%)	2.95	57	HEALTH	3	48

- Larcrest Carlin VG87 (Dam of FR2318)
- High GTPI 2495 From The Larcrest Cosmopolitan Cow Family
- Total Outcross Sire
- Carlino Transmits Volume With Excellent Components
- Top Sire For Type, Legs & Feet And Udders

Linear Trait Profile: ICBF Dec. 2016									
		-3	-2	-1	0	1	2	3	
Overall Type	Poor								Excellent +2.39
Overall Udder	Poor								Excellent +2.76
Feet & Legs	Poor								Excellent +2.68

CO-OP OMAN LOYDIE (OYK)

Daughter Proven

HOLUSAM000062030790
OMAN X BW MARSHALL X RUDOLPH
 aAa: 435



ICBF DECEMBER 2016				Sub Index	
	€	Rel. %		€	Rel. %
EBI	117	97			
MILK	58	99	CALVING	49	99
Milk Kgs	+215	99	Direct Calving Diff. (%)	2.00	99
Fat	+10kgs	+0.03%	99	Gestation Length (Days)	-4.66
Protein	+10kgs	+0.05%	99	BEEF	-9
FERTILITY	33	94	MAINTENANCE	-13	97
Calving Interval (Days)	-2.13	94	MANAGEMENT	-6	91
Survival (%)	0.56	94	HEALTH	7	92

- Excellent All Round Sire
- Very Easy Calving, Suitable For Heifers
- Great Combination of Milk (+215 Kgs) & Protein (+0.05)
- Available In Sexed Semen 75% & 90%

D
A
U
G
H
T
E
R

P
R
O
V
E
N

E
B
I
28

MONOLIT

(FR4179)

Genomic Proof

HOLDEUM000121688312

MICHIGAN X EPIC X OMAN OMAN

aAa: 435



Eleisa (Dam of FR4179)

- New Outcross Sire From Germany
- Will Leave Medium Sized Cows With Excellent Udders
- Strong Cows With Great Chest & Rump Width
- Robot Friendly Sire
- Terrific Health Sub Index +€11

ICBF December 2016		Sub Index	
	€	Rel. %	
EBI	174	51	
MILK	48	62	
Milk Kgs	+209	62	
Fat	+14 Kgs, +0.09%	62	
Protein	+8 Kgs, +0.02%	62	
FERTILITY	77	51	
Calving Interval (Days)	-2.87	51	
Survival (%)	3.45	51	
CALVING	44	47	
Direct Calving Diff. (%)	1.50	47	
Gestation Length (Days)	-2.79	48	
BEEF	-8	48	
MAINTENANCE	0	45	
MANAGEMENT	2	5	
HEALTH	11	45	

Linear Trait Profile: ICBF Dec. 2016

		-3	-2	-1	0	1	2	3		
Overall Type	Poor	[Progressive Bar]						Excellent	+2.36	
Overall Udder	Poor	[Progressive Bar]						Excellent	+2.13	
Feet & Legs	Poor	[Progressive Bar]						Excellent	+3.12	

LYNBROOK SPLENDOR

(SKW)

Daughter Proven

HOLIRLM272004710937

OMAN OMAN X SHOTTLE X ROYLANE JORDAN

aAa: 423



Sahara Sky EX90 UK (Full sister to SKW)

- Great Farmer Satisfaction With His Milking Daughters
- Good Production Sire (+217 Kgs Milk)
- Transmits Excellent Type +2.33
- Daughters Have Great Rump Structure

ICBF December 2016		Sub Index	
	€	Rel. %	
EBI	77	82	
MILK	40	94	
Milk Kgs	+217	94	
Fat	+3 Kgs, -0.09%	94	
Protein	+9 Kgs, +0.02%	94	
FERTILITY	2	72	
Calving Interval (Days)	-0.20	72	
Survival (%)	-0.03	72	
CALVING	38	93	
Direct Calving Diff. (%)	2.70	96	
Gestation Length (Days)	-3.51	98	
BEEF	-3	93	
MAINTENANCE	-8	67	
MANAGEMENT	4	50	
HEALTH	4	74	

Linear Trait Profile: ICBF Dec. 2016

		-3	-2	-1	0	1	2	3		
Overall Type	Poor	[Progressive Bar]						Excellent	+2.33	
Overall Udder	Poor	[Progressive Bar]						Excellent	+1.91	
Feet & Legs	Poor	[Progressive Bar]						Excellent	+2.05	

D A U G H T E R P R O V E N E B I 29

BIG MAIKI**(S1689)****Daughter
Proven**

HOLNLDM000740466834
MAIK X JORRYN X ABRIAN
aAa: 165



ICBF December 2016		Sub Index	
		€	Rel. %
EBI		68	59
MILK		34	69
Milk Kgs		279	69
Fat	+8 Kgs,	-0.06%	69
Protein	+8 Kgs,	-0.03%	69
FERTILITY		-6	64
Calving Interval (Days)		1.73	64
Survival (%)		1.26	64
CALVING		38	75
Direct Calving Diff. (%)		3.04	85
Gestation Length (Days)		-3.48	90
BEEF		-6	34
MAINTENANCE		12	21
MANAGEMENT		-4	11
HEALTH		1	51

- **The Most Talked About Sire In Holland Today**
- **Backed By Generations Of High Producing Long Lasting Cows**
- **Breeds Medium Sized Cows With Good Strength & Excellent Udders**
- **Over 2 Points In Type On Linear Classification**

Linear Trait Profile: ICBF Dec. 2016

		-3	-2	-1	0	1	2	3		
Overall Type	Poor								Excellent	+2.01
Overall Udder	Poor								Excellent	+1.51
Feet & Legs	Poor								Excellent	+1.99

OTHER INTERESTING aAa & PRODUCTION SIRES AVAILABLE

Name	Code	EBI	aAa	Kgs M.	Kgs F.	Kgs P.	% Fat	% Prot.	Comments
Lisduff Legacy	LDL	€109	324	+106	+6	+2	+0.03	-0.04	Great Irish Daughter Proof
Toystory	S430	-€23	132	+424	+7	+8	-0.15	-0.10	Great Production with Super Type
Eminem	EMM	€39	351	+138	+6	+7	+0.00	+0.04	Impressive Protein Sire
Lynbrook Blair	YLB	€78	423	+438	+14	+13	-0.06	-0.02	High Volume Genomic Sire
Blackboy	S1494	€133	243	+166	+5	+7	+0.01	+0.04	Good Daughter Proof with Percentages
Omjet	OJT	€102	153	+193	+13	+8	+0.09	+0.02	Easy Calving Sire
Lightway	S2028	€19	162	+194	+6	+9	-0.03	+0.03	Outcross Bloodline. Excellent Legs & Feet
Timmer Climax	S706	€123	516	+144	+8	+6	+0.04	+0.01	Great Irish proof
Westcoast SRM	S2277	€157	561	+135	+13	+6	+0.13	+0.03	High EBI Genomic aAa Sire
Vaucluse	VUC	€44	531	+292	+13	+11	+0.02	+0.02	Excellent Milk Production with Solids
Lecko	S1028	€24	651	+404	+5	+12	-0.18	-0.03	Outcross Sire with Excellent Type
Emalo	S1502	€24	615	-44	+9	+3	+0.18	+0.08	Transmits High Fat & Protein Percentages
Cervi Woodstock	S856	-€28	561	+42	+7	+2	+0.09	+0.00	Great Irish Daughter Proof
Idahoe Joe SRM	FR2294	€11	513	+56	+15	+11	+0.01	-0.02	Interesting aAa Figures
Pokerface	FR2124	€17	531	+330	+14	+12	+0.02	+0.02	aAa Sire with Good Percentages

**D
A
U
G
H
T
E
R
P
R
O
V
E
N
E
B
I
30**

PEELDIJKER OUTLAW (FR2291)

Daughter Proven

REDNLDM000532478861

JERUDO X CANVAS X RUBENS

aAa: 516

a2a2 Milk



- Calving Ease Sire Suitable For Maiden Heifers
- Bred From A Tremendous Cow Family
- From A Proven Sire Stack
- Available in Sexed Semen

TACKLEBERRY (S2066)

Daughter Proven

HOLNLDM000520359307

LAWN BOY X GOLDSTAR X RONALD

aAa: 243



- Easy Calving Sire With Excellent Health Traits
- Unique Bloodline, Outcross For Most Pedigrees
- Sires Easy Care Cows

MALANDO (S1330) SRM

Daughter Proven

REDNLDM000437064008

TOPSPEED GOGO X KIAN X JEROM

aAa: 432

a2a2 Milk



- Easy Calving Sire
- Great Reports From His Irish Milking Daughters
- +138 Kgs Milk With +0.12% Fat & +0.08% Protein
- Transmits Sloping Wide Rumps

LADY LOVER (FR2292)

Daughter Proven

REDNLDM000894360914

LOUSTAR X CLASSIC X RONALD

aAa: 342

a2a2 Milk



- Easy Calving Sire Suitable For Heifers
- Outcross Pedigree With Great Kgs Of Milk (+206 Kgs)
- Daughters Display Excellent Strength & Dairy Character

Name	Code	EBI	aAa	Kgs M.	Kgs F.	Kgs P.	% Fat	% Prot.
Peeldijker Outlaw	FR2291	€28	516	+292	+11	+9	-0.01	-0.02
Tackleberry	S2066	€64	243	+162	+5	+7	-0.01	+0.02
Malando SRM	S1330	€49	432	+138	+12	+9	+0.12	+0.08
Lady Lover	FR2292	-€25	342	+206	+15	+6	+0.12	-0.02

U
N
I
Q
U
E

a
A
a

S
I
R
E
S

MURPHY (S2041)

Daughter Proven

HOLNLDM000899849362
LONAR X SHOGUN X CELLO
 aAa: 615

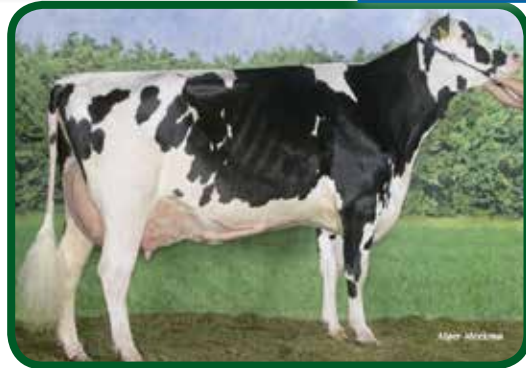


- Murphy Is A Lineback From Holland
- He Has An Extremely Reliable Pedigree
- Transmits Good Production With Protein

FAWI PIRLO (S2107)

Daughter Proven

HOLNLDM000538153368
JERUDO X ALVES X JUMBO
 aAa: 516



- Outcross Pedigree From Holland
- Daughters Maintain Body Condition Throughout Lactation
- Transmits Outstanding Feet & Legs
- Udders Are Well Attached (Front & Rear)

BIG WINNER (FR2125)

Daughter Proven

HOLNLDM000429759583
WIN 395 X FRANKENHOF LUCKY LEO X FEIKJE'S PINKPOP ET
 aAa: 516



- Breeds Great Milking Cows
- Slow Maturing Daughters
- From a Family Renowned For Longevity With 99% Reliability In Holland

JUNO (S2043)

Daughter Proven

HOLNLDM000394346135
OMAN X ADDISON X RONALD
 aAa: 165



a2a2 Milk



- Easy Calving Sire
- Cell Count Improver of +€6
- Easy Care Cows With Excellent Chest Width
- Interesting aAa figures Of 165

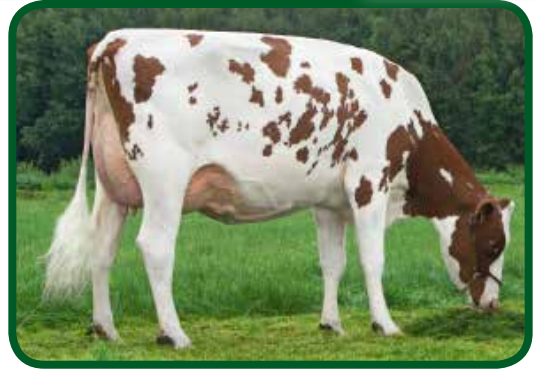
Name	Code	EBI	aAa	Kgs M.	Kgs F.	Kgs P.	% Fat	% Prot.
Murphy	S2041	€18	615	+175	+2	+7	-0.08	+0.02
FAWi Pirlo	S2107	€18	516	+307	+10	+10	-0.04	+0.00
Big Winner	FR2125	€66	516	+155	+13	+7	+0.11	+0.02
Juno	S2043	€101	165	+314	+12	+10	-0.01	-0.01

FLOYD**(S2159)****SRM****Daughter Proven**

REDNLDM000446136044

SUPREME X KIAN X BEVERLAKE

aAa: 651

a2a2
Milk

- Easy Calving 651 Bull
- Breeds High Component Trouble Free Cows
- Daughters Go in Calf Easily
- Bred from Generations of Long Lasting Cows

ARKANSAS**(S2291) SRM****Daughter Proven**

HOLNLDM000495390459

ARNOLD X REDGOLD X RED POWER

aAa: 516



- Dam Line is Bred From 6 Generations of at least +3.50% Protein
- Great Longevity Pedigree
- Strong Solid Cows With Tremendous Body Capacity

MR. JUSTIN**(S2149)****Daughter Proven**

HOLNLDM000481762079

JORRYN X DESIGN X BLACKSTAR

aAa: 564



- Outcross Pedigree, (No Oman, Shottle or Goldwyn)
- Positive Production Traits
- EX91 Granddam That Gave Over 140,000Kgs of Milk
- Breeds Medium Sized Cows

JONES**(S1672)****Daughter Proven**

HOLNLDM000388710470

MASCOL X ADDISON X JIMTOWN

aAa: 435

a2a2
Milk

- One of Mascol's (MCL) Best Sons
- Leaves Robust Cows with Good Production
- Transmits Wide Rumps with Good Legs & Feet
- A2A2 Sire

Name	Code	EBI	aAa	Kgs M.	Kgs F.	Kgs P.	% Fat	% Prot.
Floyd	SRM S2159	€78	651	+60	+14	+7	+0.19	+0.09
Arkansas	SRM S2291	€52	516	-73	+2	+3	+0.08	+0.10
Mr. Justin	S2149	€25	564	+266	+10	+9	0.00	0.00
Jones	S1672	-€11	435	+171	+10	+6	+0.05	+0.01

UNIQUE

aAa

SIRE

ERAGON P (FR4161) SRM

Daughter Proven

HOLNLDM000938665511

FIDELITY X LAWNBOY X STADEL

aAa: 261



- Polled Sire
- Excellent Production with Good Solids
- Breeds Superb Udders with Strong Legs & Feet
- From a Proven Sire Stack



ICEMAN (FR2295)

Genomic Proof

HOLNLDM000938665511

TWIST X ACTIVE X GOLDWYN

aAa: 561



- From the Same Family as Tomohawk & Cosmo
- Many 10,000 Litre Cows in Pedigree
- Interesting aAa Figure of 561
- +2.46 on Type



KALLISTO RED (FR2293)

Daughter Proven

REDNLDM000546428229

KODAK X CANVAS X LIGHTING

aAa: 534



- Exciting Red Bull with Outcross Pedigree
- Great Production Sire, +469 Kgs of Milk
- Positive for Health Traits
- Feet & Leg Improver



RIVELINO 409 (S2064)

Daughter Proven

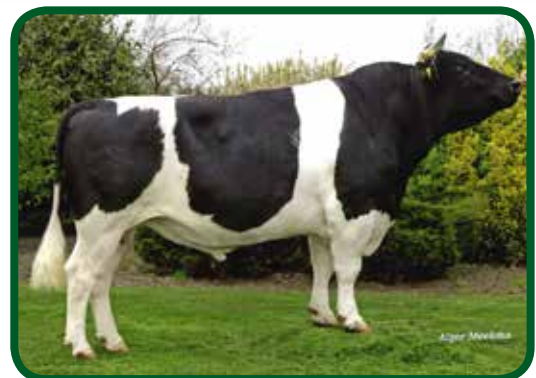
DFRNLDM000328410628

RIVELINO 377 X RIVELINO 344 X RIVELINO

aAa: 156



- Outcross Sire for Friesian Breeders
- Easy Calving, Suitable for Heifers
- Excellent Semen Fertility
- Improves Milking Speed



Name	Code	EBI	aAa	Kgs M.	Kgs F.	Kgs P.	% Fat	% Prot.
Eragon P SRM	FR4161	€59	261	+266	+12	+11	+0.03	+0.03
Iceman	FR2295	€10	561	+223	+13	+5	+0.06	-0.04
Kallisto Red	FR2293	€40	516	+469	+13	+13	-0.09	-0.04
Rivelino 409	S2064	-€24	156	-637	-17	-21	+0.15	+0.02

DOVEA JUBILARIS**(JRB)****Daughter
Proven****HOLNLDM000716663665 FR 100%****PDY X HOLWERDA THIERRY****X ADEMA 141****aAa: 465****a2a2
Milk**

ICBF December 2016		Sub Index	
	€	Rel. %	
EBI	205	81	
MILK	52	91	
Milk Kgs	-33	91	
Fat	+2 Kgs, +0.06%	91	
Protein	+7 Kgs, +0.15%	91	
FERTILITY	117	76	
Calving Interval (Days)	-7.46	76	
Survival (%)	2.05	76	
CALVING	51	93	
Direct Calving Diff. (%)	2.50	97	
Gestation Length (Days)	-5.02	99	
BEEF	-24	92	
MAINTENANCE	18	59	
MANAGEMENT	0	56	
HEALTH	-9	66	

- Ireland's No. 1 EBI
Daughter Proven Friesian Sire
- Also Holland's No. 1 Pure Friesian Sire
- Great Protein Improver with +0.15% Protein
- Short Gestation Sire (-5.02 Days)
- Semen Limited

FIRODA MEINSE 2**(FOE)****Genomic
Proof****HOLIRLM211180391923 FR 88%****TMI x SVD x BAV****Breeder: P. Healy, Castlecomer, Kilkenny****aAa: 426**

ICBF December 2016		Sub Index	
	€	Rel. %	
EBI	186	53	
MILK	-3	58	
Milk Kgs	-13	58	
Fat	+3 Kgs, +0.13%	58	
Protein	-3 Kgs, +0.04%	58	
FERTILITY	156	47	
Calving Interval (Days)	-9.10	47	
Survival (%)	3.61	47	
CALVING	20	84	
Direct Calving Diff. (%)	3.40	86	
Gestation Length (Days)	-1.59	95	
BEEF	-1	47	
MAINTENANCE	13	46	
MANAGEMENT	3	32	
HEALTH	-2	44	

- High EBI Friesian Sire
- Great Fertility Sub Index €156
- Progeny On The Ground Are Impressive
- Dam Is 3rd Generation VG

**P
U
R
E

F
R
I
E
S
I
A
N
S**

MOUNTAIN BASIL 11

(FR4079)

Genomic Proof

HOLIRLM341119041285 FR 84%

RKO x PZI x TIH

Breeder: M. Spillane, Fethard, Co. Tipperary

aAa: N/A



- New High EBI Friesian Sire with EBI of €192
- From the Famous Mountain Rose Cow Family
- Renowned for Production, Protein & Longevity
- The Bull Displays Power & Strength

ICBF December 2016		Sub Index	
	€	Rel. %	
EBI	192	56	
MILK	3	66	
Milk Kgs	-98	66	
Fat	+1 Kgs, +0.08%	66	
Protein	-1 Kgs, +0.04%	66	
FERTILITY	159	57	
Calving Interval (Days)	-8.82	57	
Survival (%)	4.10	57	
CALVING	27	47	
Direct Calving Diff. (%)	3.00	48	
Gestation Length (Days)	-2.03	46	
BEEF	-2	46	
MAINTENANCE	3	47	
MANAGEMENT	6	33	
HEALTH	-4	52	

CATLANE MASTERCHEF

(FCM)

Genomic Proof

HOLGBRM200924601124 FR 97%

**CATLANE SPEAKER X
SHARCOMBE BETA X
DOUNESIDE AVENGER**



aAa: 531



- Easy Calving Friesian Sire Suitable for Maiden Heifers
- Short Gestation Sire (-4.38 Days)
- Percentage Improver with +0.14% of Fat & +0.10% of Protein
- Super Sub Index for Health +€8

ICBF December 2016		Sub Index	
	€	Rel. %	
EBI	134	56	
MILK	-22	58	
Milk Kgs	-366	58	
Fat	-6 Kgs, +0.14%	58	
Protein	-7 Kgs, +0.10%	58	
FERTILITY	94	50	
Calving Interval (Days)	-5.50	50	
Survival (%)	2.15	50	
CALVING	47	86	
Direct Calving Diff. (%)	2.10	91	
Gestation Length (Days)	-4.38	96	
BEEF	-9	60	
MAINTENANCE	15	50	
MANAGEMENT	1	26	
HEALTH	8	44	

PURE FRIESIANS

BIG PIET ADEMA**(PDY)****Daughter Proven**

DFRNLDM000498362590 FR 100%
NORBERT 105 X PIET ADEMA 158
X HOLWERDA THIERRY

aAa: 153 



ICBF DECEMBER 2016			Sub Index	
	€	Rel. %	€	Rel. %
EBI	81	86		
MILK	23	97	CALVING	5 96
Milk Kgs	-90	97	Direct Calving Diff. (%)	2.10 97
Fat +2kgs	+0.10%	97	Gestation Length (Days)	-5.48 99
Protein +2kgs	+0.09%	97	BEEF	-26 97
FERTILITY	5	73	MAINTENANCE	31 87
Calving Interval (Days)	-0.97	73	MANAGEMENT	-4 71
Survival (%)	-0.55	73	HEALTH	-3 71

- **Outcross for Dovea**
- **No. 3 Friesian Sire in Holland**
- **Very Easy Calving, Suitable for Maiden Heifers**
- **Short Gestation Sire (-5.48 Days)**

LAKEMEAD DAN**(KKM)****Daughter Proven**

HOLGBRM322325202492 FR 100%
LAKEMEAD RANCHER X
LAKEMEAD FOUNDATION X
LEIGHTON WORKBOY

aAa: 561 



ICBF DECEMBER 2016			Sub Index	
	€	Rel. %	€	Rel. %
EBI	91	59		
MILK	-24	60	CALVING	45 91
Milk Kgs	-61	60	Direct Calving Diff. (%)	2.20 98
Fat +0kgs	+0.03%	60	Gestation Length (Days)	-3.88 99
Protein -4kgs	-0.04%	60	BEEF	-15 86
FERTILITY	68	48	MAINTENANCE	20 58
Calving Interval (Days)	-4.94	48	MANAGEMENT	1 34
Survival (%)	0.53	48	HEALTH	-3 37

- **Easy Calving Sire, Suitable for Maiden Heifers**
- **Short Gestation Sire (-3.88 Days)**
- **One of Lakemead Rancher's Best Sons**
- **Outcross Bloodline for Dovea**

DUNUM HELMUT**(DHZ)****Daughter Proven**

HOLIRLM241024241030 FR 100%
RELACHS X LAKI

aAa: 435 



ICBF DECEMBER 2016			Sub Index	
	€	Rel. %	€	Rel. %
EBI	81	69		
MILK	-44	88	CALVING	43 86
Milk Kgs	-452	88	Direct Calving Diff. (%)	0.90 90
Fat -5kgs	+0.27%	88	Gestation Length (Days)	-3.25 90
Protein -12kgs	+0.07%	88	BEEF	-24 90
FERTILITY	69	50	MAINTENANCE	33 55
Calving Interval (Days)	-5.02	50	MANAGEMENT	-5 51
Survival (%)	0.59	50	HEALTH	8 51

- **Very Easy Calving Daughter Proven Sire That Is Ideal For Small Maiden Heifers**
- **Outcross Bloodline For Dovea**
- **Good Percentages of Fat & Protein**
- **Positive for Health +€8**

PURE FRIESIANS

SLIABHNAMBON CHAMPION 6 (ZSC)

Genomic Proof

HOLIRLM341118441168 FR 91% 

ANY X PZI X TIH

Breeder: M. Ryan, Fethard, Co. Tipperary

aAa: 435



- Reliable Genetics, ANY from a PZI Dam
- Positive for Production & Milk Solids
- Impressive Fertility Sub Index of €86
- Excellent Young Stock

ICBF DECEMBER 2016			Sub Index		
	€	Rel. %		€	Rel. %
EBI	143	60			
MILK	13	67	CALVING	39	84
Milk Kgs	+22	67	Direct Calving Diff. (%)	2.30	86
Fat +2kgs	+0.01%	67	Gestation Length (Days)	-3.44	96
Protein +2kgs	+0.03%	67	BEEF	-9	47
FERTILITY	86	56	MAINTENANCE	20	45
Calving Interval (Days)	-5.13	56	MANAGEMENT	0	31
Survival (%)	1.89	56	HEALTH	-6	50

DUNUM BRANDREW (WZB)

Daughter Proven

HOLIRLM241024281034 FR 59%

BQB X BFU X HWT

Breeder: M. Crowe, Doon,

Co. Limerick

aAa: 453



- Positive for Production +€113
- Short Gestation Sire (-4.62 Days)
- Great Farmer Satisfaction with Daughters
- Excels on Milking Speed

ICBF DECEMBER 2016			Sub Index		
	€	Rel. %		€	Rel. %
EBI	128	86			
MILK	9	97	CALVING	50	97
Milk Kgs	+113	97	Direct Calving Diff. (%)	2.50	99
Fat +2kgs	-0.04%	97	Gestation Length (Days)	-4.62	99
Protein +3kgs	-0.02%	97	BEEF	-8	96
FERTILITY	76	76	MAINTENANCE	-3	68
Calving Interval (Days)	-4.04	76	MANAGEMENT	1	76
Survival (%)	2.12	76	HEALTH	4	76

SHANGAN CAMERON 3 (SGC)

Daughter Proven

HOLIRLM351029531097 FR 100%

CNZ X REARY ADAM X TTF

Breeder: R. Mahony, Butlerstown,

Co. Waterford

aAa: 546



- Daughters Have Great Strength
- Positive For All Management Traits
- Great Cross On Extreme Holstein Cows

ICBF DECEMBER 2016			Sub Index		
	€	Rel. %		€	Rel. %
EBI	104	90			
MILK	-41	97	CALVING	30	97
Milk Kgs	-349	97	Direct Calving Diff. (%)	2.80	98
Fat -6kgs	+0.16%	97	Gestation Length (Days)	-3.06	99
Protein -10kgs	+0.04%	97	BEEF	-14	97
FERTILITY	109	83	MAINTENANCE	17	85
Calving Interval (Days)	-6.68	83	MANAGEMENT	1	76
Survival (%)	2.19	83	HEALTH	2	76

RAHEENARRAN BCG SOCHAR

(RVJ)

Daughter Proven

HOLIRLM211056181109 FR 94%

B. GLENALBYN X TIH X GOY

Breeder: B. Daniels, Kilmoganny,

Co. Kilkenny

aAa: 642



DoveaGENETICS



ICBF DECEMBER 2016			Sub Index		
	€	Rel. %		€	Rel. %
EBI	120	96			
MILK	-26	99	CALVING	59	99
Milk Kgs	-487	99	Direct Calving Diff. (%)	1.30	99
Fat	-10kgs	+0.19%	Gestation Length (Days)	-5.88	99
Protein	-9kgs	+0.16%	BEEF	-17	99
FERTILITY	89	92	MAINTENANCE	3	97
Calving Interval (Days)	-6.01	92	MANAGEMENT	1	95
Survival (%)	1.15	92	HEALTH	11	90

- Very Easy Calving, Suitable for Very Small Maiden Heifers
- Ideal Cross on Extreme Holstein Cows
- Great Daughters in Herds

REARY MC CARTHY

(RIP)

Daughter Proven

HOLIRLM221106250677 FR 75%

HWT X PSM X WRT

Breeder: K. Flynn, Clonaslee,

Co. Laois

aAa: 462

DoveaGENETICS



ICBF DECEMBER 2016			Sub Index		
	€	Rel. %		€	Rel. %
EBI	107	98			
MILK	-1	99	CALVING	26	99
Milk Kgs	-99	99	Direct Calving Diff. (%)	2.80	99
Fat	+3kgs	+0.13%	Gestation Length (Days)	-1.89	99
Protein	-2kgs	+0.03%	BEEF	-6	99
FERTILITY	75	97	MAINTENANCE	5	99
Calving Interval (Days)	-4.09	97	MANAGEMENT	3	99
Survival (%)	2	97	HEALTH	5	95

- Great Farmer Satisfaction with Daughters
- Good Balance Between Friesian (75%) & Holstein Genetics
- Health Improver +€5
- Positive for All Management Traits

TITTENSER MEINSE

(TMI)

Daughter Proven

DFRNLDM000388751347 FR 100%

JACOB 8 X DOVEA IDS

X BERKMEER BAS 99

aAa: 243

DoveaGENETICS



ICBF DECEMBER 2016			Sub Index		
	€	Rel. %		€	Rel. %
EBI	100	94			
MILK	-17	99	CALVING	14	98
Milk Kgs	-212	99	Direct Calving Diff. (%)	3.00	99
Fat	-3kgs	+0.10%	Gestation Length (Days)	-0.74	99
Protein	-5kgs	+0.04%	BEEF	-4	99
FERTILITY	86	88	MAINTENANCE	10	96
Calving Interval (Days)	-5.19	88	MANAGEMENT	4	96
Survival (%)	1.79	88	HEALTH	-1	83

- High Reliable Daughter Proven Friesian Sire
- Breeds Easily Managed Cows
- Very Impressive Black Daughters Inspected

PURE FRIESIANS

BIG PIET ADEMA 193 (FR2126) **Daughter Proven**


HOLNLDM000532664941 FR 100% 
PZI X ADEMA 158
X HOLWERDA THIERRY
 aAa: 645 



ICBF DECEMBER 2016			Sub Index		
	€	Rel. %		€	Rel. %
EBI	101	59			
MILK	24	76	CALVING	40	73
Milk Kgs	-44	76	Direct Calving Diff. (%)	3.80	71
Fat	+3kgs	+0.08%	Gestation Length (Days)	-3.87	91
Protein	+3kgs	+0.07%	BEEF	-9	33
FERTILITY	40	55	MAINTENANCE	9	32
Calving Interval (Days)	-2.41	55	MANAGEMENT	2	30
Survival (%)	0.81	55	HEALTH	-5	60

- **PZI Daughter Proven Son**
- **EBI Continues to Climb**
- **Short Gestation (-3.87 Days)**
- **Available in Sexed Semen**

MANORPARK GOOGLE (KKG) **Genomic Proof**


HOLGBRM000000659689 FR 97% 
LAKEMEAD RANDOLF X CLONEY GOLD
CLARET 2 X LAVENHAM ARIZONA
 aAa: 561



ICBF DECEMBER 2016			Sub Index		
	€	Rel. %		€	Rel. %
EBI	136	53			
MILK	-41	57	CALVING	44	87
Milk Kgs	-295	57	Direct Calving Diff. (%)	2.70	93
Fat	-6kgs	+0.10%	Gestation Length (Days)	-4.20	98
Protein	-9kgs	+0.02%	BEEF	0	61
FERTILITY	129	44	MAINTENANCE	5	48
Calving Interval (Days)	-8.25	44	MANAGEMENT	-4	21
Survival (%)	2.23	44	HEALTH	3	41

- **Outcross Pedigree For Dovea**
- **Positive For Health +€3 And Fertility +€129**
- **Dam & Granddam Classified Excellent**

TEMPLEMICHAEL ZEBO (FR2279) **Genomic Proof**

HOLDEUM001265302016 FR 94% 
RBJ x CZT x DGM
 Breeder: A. Nicholson, Youghal, Co. Cork
 aAa: 435



ICBF DECEMBER 2016			Sub Index		
	€	Rel. %		€	Rel. %
EBI	156	54			
MILK	-11	66	CALVING	23	47
Milk Kgs	-248	66	Direct Calving Diff. (%)	3.40	47
Fat	-3kgs	+0.12%	Gestation Length (Days)	-2.10	48
Protein	-5kgs	+0.07%	BEEF	0	47
FERTILITY	140	52	MAINTENANCE	12	44
Calving Interval (Days)	-8.20	52	MANAGEMENT	-8	25
Survival (%)	3.21	52	HEALTH	0	49

- **Outcross Bloodline for Dovea**
- **VG Dam Averaged in 1st Six Lactations: 8,419Kgs, 4.04% Fat, 3.77% Protein with a 366 Day Calving Interval**
- **Impressive Fertility Sub Index +€140**

KIRKBY JAYSON**(KJY)****Daughter
Proven****BRFGBRM00000628627 FR 100%****MARSHSIDE ROCKET 3 X****SHARCOMBE BETA X****BRINBOWER RUFUS****aAa: 531**

- **One of Dovea's Most Popular Friesian Sires**
- **Great Production from a Friesian Sire (+122 Kgs Milk)**
- **Super Health Sub Index of +€7**
- **Excels on Milking Speed**

ICBF December 2016		Sub Index	
	€	Rel. %	
EBI	99	97	
MILK	11	99	
Milk Kgs	+122	99	
Fat	+5 Kgs, +0.01%	99	
Protein	+3 Kgs, -0.03%	99	
FERTILITY	50	95	
Calving Interval (Days)	-4.46	95	
Survival (%)	-0.43	95	
CALVING	28	99	
Direct Calving Diff. (%)	2.80	99	
Gestation Length (Days)	-2.49	99	
BEEF	-17	99	
MAINTENANCE	20	96	
MANAGEMENT	-1	93	
HEALTH	7	87	

FIRODA RANDY 7**(FR2276)****Genomic
Proof****HOLIRLM211180342041 FR 97%****LFK X VML X SVD****Breeder: P. Healy, Castlecomer, Co. Kilkenny****aAa: 516**

- **High EBI Lakemead Randolph Son**
- **Bred from A Great Cow Family – The Twinks**
- **Great Breeding Values for Fertility €139 & Health +€3**

ICBF December 2016		Sub Index	
	€	Rel. %	
EBI	175	51	
MILK	-1	60	
Milk Kgs	-212	60	
Fat	+2 Kgs, +0.18%	60	
Protein	-3 Kgs, +0.07%	60	
FERTILITY	139	49	
Calving Interval (Days)	-8.70	49	
Survival (%38)	2.54	49	
CALVING	38	53	
Direct Calving Diff. (%)	2.80	49	
Gestation Length (Days)	-3.56	60	
BEEF	-4	45	
MAINTENANCE	5	42	
MANAGEMENT	-5	24	
HEALTH	3	45	

FRIESIAN TEST BULLS 2017

FIRODA XGA ADEMA 5

(FR4096)

Genomic Proof

HOLIRLM211180352224 FR 81%

XGA x RIP x BFU

Breeder: P. Healy, Castlecomer, Co. Kilkenny

- New High EBI Friesian Sire €201
- Good Components
- Positive for Health +€4
- Dam Averaged : 7,135Kgs, 4.19% Fat, 3.77% Protein

ICBF DECEMBER 2016			Sub Index	
	€	Rel. %	€	Rel. %
EBI	201	42		
MILK	11	50	CALVING	29 53
Milk Kgs	-192	50	Direct Calving Diff. (%)	2.50 50
Fat	+7kgs	+0.25%	Gestation Length (Days)	-2.13 60
Protein	-2kgs	+0.08%	BEEF	-2 42
FERTILITY	149	37	MAINTENANCE	8 39
Calving Interval (Days)	-8.76	37	MANAGEMENT	2 17
Survival (%)	3.31	37	HEALTH	4 34

RAHEENARRAN MR POTTER

(FR4133)

Genomic Proof

HOLIRLM211180352224 FR 94%

FOE x PDY x BCG

Breeder: B. Daniels, Kilmoganny, Co. Kilkenny

- Interesting Pedigree
- Super Fertility Improver of €154
- Traditional Friesian Type Sire

ICBF DECEMBER 2016			Sub Index	
	€	Rel. %	€	Rel. %
EBI	198	43		
MILK	0	51	CALVING	39 46
Milk Kgs	-241	51	Direct Calving Diff. (%)	1.90 49
Fat	-4kgs	+0.10%	Gestation Length (Days)	-4.34 60
Protein	-3kgs	+0.10%	BEEF	-16 38
FERTILITY	154	40	MAINTENANCE	15 37
Calving Interval (Days)	-9.11	40	MANAGEMENT	1 15
Survival (%)	3.40	40	HEALTH	-2 36

FIRODA XGA ADEMA 7

(FR4097)

Genomic Proof

HOLIRLM211180382251 FR 84%

XGA x ANY x TIH

Breeder: P. Healy, Castlecomer, Co. Kilkenny

- High EBI Friesian Sire Of €209
- Dam Produced In Her 1st Lactation: 7,703Kgs, 3.92% Fat & 3.56% Protein

ICBF DECEMBER 2016			Sub Index	
	€	Rel. %	€	Rel. %
EBI	209	44		
MILK	23	52	CALVING	26 53
Milk Kgs	+34	52	Direct Calving Diff. (%)	2.50 50
Fat	+6kgs	+0.07%	Gestation Length (Days)	-1.79 60
Protein	+3kgs	+0.04%	BEEF	-5 41
FERTILITY	148	41	MAINTENANCE	10 39
Calving Interval (Days)	-8.73	41	MANAGEMENT	1 16
Survival (%)	3.30	41	HEALTH	6 36

ANSCHIN

(FR4064)

Genomic Proof

DFRDEUM001265302479 FR 100%

ALASKA x HMZ x NERO

- Outcross Sire from Germany
- Dam Averaged: 10,171Kgs, 3.79% Fat, 3.49% Protein First 3 Lactations
- Granddam Averaged 7,725Kgs, 4.23% Fat, 3.53% Protein in 7 Lactations
- Positive for Health +€6



PURE FRIESIANS

EIK (EKE)**Daughter Proven****RDCNORM000000010540****LUIRO X ULSAKER X MOE****aAa: 345****geno****a2a2 Milk**

- Irish Milking Daughters are Outstanding
- Very Easy Calving Sire, Suitable for Small Maiden Heifers
- Short Gestation Sire (-4.60 Days)
- Daughters have Great Legs & Feet

ICBF December 2016		Sub Index	
	€	Rel. %	
EBI	159	91	
MILK	49	99	
Milk Kgs	+123	99	
Fat	+4 Kgs, -0.02%	99	
Protein	+9 Kgs, +0.07%	99	
FERTILITY	54	85	
Calving Interval (Days)	-3.00	85	
Survival (%)	1.41	85	
CALVING	50	98	
Direct Calving Diff. (%)	2.10	99	
Gestation Length (Days)	-4.63	99	
BEEF	-5	98	
MAINTENANCE	10	85	
MANAGEMENT	-2	81	
HEALTH	4	73	

BRAUT (ZBR)**Daughter Proven****RDCNORM000000010177****KREJSTAD X KJAER X IHANSMOEN****aAa: 534****geno**

- Super Daughter Production (See Below) in Holland
- Excellent Type
- Impressive Beef Offspring
- Daughters Have Excellent Temperament

ICBF December 2016		Sub Index	
	€	Rel. %	
EBI	120	87	
MILK	27	97	
Milk Kgs	+79	97	
Fat	+7 Kgs, +0.07%	97	
Protein	+4 Kgs, +0.02%	97	
FERTILITY	59	85	
Calving Interval (Days)	-3.05	85	
Survival (%)	1.78	85	
CALVING	34	96	
Direct Calving Diff. (%)	2.50	97	
Gestation Length (Days)	-3.00	99	
BEEF	12	93	
MAINTENANCE	-13	60	
MANAGEMENT	1	64	
HEALTH	1	68	

DAUGHTERS MILKING IN HOLLAND

No. Dtrs	Lactation	Milk Kgs	Fat %	Protein %
1,671	1 st	+7,236	+4.38	+3.51
546	2 nd	+8,061	+4.40	+3.62

EGGTROEN (EGE)**Daughter Proven****RDCNORM000000010579****GUTERUD X RANES X YNAERLAND****aAa: 342****geno**

ICBF December 2016		Sub Index	
	€	Rel. %	
EBI	174	81	
MILK	42	92	
Milk Kgs	+58	92	
Fat	+4 Kgs, +0.02%	92	
Protein	+7 Kgs, +0.07%	92	
FERTILITY	81	77	
Calving Interval (Days)	-4.63	77	
Survival (%)	1.99	77	
CALVING	36	91	
Direct Calving Diff. (%)	3.90	95	
Gestation Length (Days)	-3.32	98	
BEEF	8	88	
MAINTENANCE	7	55	
MANAGEMENT	-2	59	
HEALTH	3	57	



- **The No. 1 Norwegian Red Sire on the ICBF Active Bull List**
- **Great Balanced Sire Between Production & Fertility**
- **Breeds Medium Sized Cows with Excellent Feet & Legs**
- **Positive for Health Traits +€3**

VAL (VLX)**Daughter Proven****RDCNORM000000010918****SORBY X ORRARYA X B JURIST****aAa: 315****geno**

ICBF December 2016		Sub Index	
	€	Rel. %	
EBI	113	49	
MILK	17	60	
Milk Kgs	-14	60	
Fat	+2 Kgs, +0.04%	60	
Protein	+2 Kgs, +0.04%	60	
FERTILITY	42	47	
Calving Interval (Days)	-2.37	47	
Survival (%)	1.02	47	
CALVING	44	81	
Direct Calving Diff. (%)	1.03	92	
Gestation Length (Days)	-3.32	97	
BEEF	-9	40	
MAINTENANCE	14	19	
MANAGEMENT	-2	4	
HEALTH	5	4	



- **Very Easy Calving Sire, Suitable for Maiden Heifers**
- **Ideal Sire for Jersey Cross Heifers**
- **Excels on Milking Speed**
- **Great Health Sub Index of +€5**

SAUR**(NR4171)****Genomic
Proof****RDCNORM000000011572****ZAD X VSK X LIEN****aAa: 453****a2a2
Milk****geno****Norwegian Proof - December 2016**

Production	108
Milk Kgs	100
Fat Kgs	100
Fat %	118
Protein Kgs	104
Protein %	110
Daughter Fertility	134
Total Merit Index	34
Temperament	102
Calving to 1 st Insemination	119
Clinical Mastitis	114
SCC	122
Claw Health	108
Udder Index	111
Foot Angle	103
Stature	101
Beef Index (Males)	99

- Polled Sire
- Impressive Production With Milk Solids
- Good Management Traits
- Excellent Claw Health
- High EBI of €203

SITJE**(NR4173)****Genomic
Proof****RDCNORM000000011655****REFNES X EKE X NZT****aAa: N/A****geno****Norwegian Proof - December 2016**

Production	129
Milk Kgs	116
Fat Kgs	128
Fat %	112
Protein Kgs	127
Protein %	119
Daughter Fertility	104
Total Merit Index	30
Temperament	108
Calving to 1 st Insemination	115
Clinical Mastitis	109
SCC	101
Claw Health	103
Udder Index	104
Foot Angle	102
Stature	97
Beef Index (Males)	100

- A Leader In Norway For Production
- Extreme Values For Protein
- Excellent Temperament Of 108
- Will Leave Medium Sized Cows
- High EBI Sire €174

**N
O
R
W
E
G
I
A
N

R
E
D
S**

WOODTOWN PRIMUS PRIME (JE2263)

Parent
Average

IE281396623072

JPS X JBY X QIX 100% Jersey

aAa: N/A



- Outcross Jersey Bloodline
- Dam Classified EX Produced an Incredible Average 950Kgs of Milk Solids in her Last 3,305 Day Lactations
- Positive for Health Sub Index of +€2

ICBF DECEMBER 2016			Sub Index		
	€	Rel. %		€	Rel. %
EBI	156	27			
MILK	55	35	CALVING	3	41
Milk Kgs	-344	35	Direct Calving Diff. (%)	1.80	43
Fat +16kgs	+0.58%	35	Gestation Length (Days)	-0.29	48
Protein +1kgs	+0.25%	35	BEEF	-55	17
FERTILITY	61	24	MAINTENANCE	81	15
Calving Interval (Days)	-1.89	24	MANAGEMENT	9	14
Survival (%)	3.16	24	HEALTH	2	10

NEXTGEN TREVOR (JE2017)

Parent
Average

IE151941680415

HJT X RKV X JBY 100% Jersey

aAa: N/A



- High EBI Jersey
- Easy Calving
- +21 Kgs of Milk Solids
- His Sire HJT is Popular in New Zealand

ICBF DECEMBER 2016			Sub Index		
	€	Rel. %		€	Rel. %
EBI	153	37			
MILK	64	40	CALVING	25	83
Milk Kgs	-329	40	Direct Calving Diff. (%)	1.60	89
Fat +19kgs	+0.62%	40	Gestation Length (Days)	-2.02	97
Protein +2kgs	+0.27%	40	BEEF	-45	36
FERTILITY	39	27	MAINTENANCE	59	27
Calving Interval (Days)	-1.29	27	MANAGEMENT	8	26
Survival (%)	1.94	27	HEALTH	3	26

DOVEA FITZMAURICE (FR4138)

Jersey
Cross

IE281632723509

JE2047 x SLW 38% Jersey

aAa: N/A



- +53 Kgs of Milk
- Dam Milked for 12 Lactations
- Good Balance Between Milk & Fertility

ICBF DECEMBER 2016			Sub Index		
	€	Rel. %		€	Rel. %
EBI	206	21			
MILK	56	31	CALVING	13	29
Milk Kgs	+53	31	Direct Calving Diff. (%)	1.60	30
Fat +13kgs	+0.20%	31	Gestation Length (Days)	-2.12	33
Protein +7kgs	+0.09%	31	BEEF	-26	16
FERTILITY	102	14	MAINTENANCE	38	13
Calving Interval (Days)	-6.65	14	MANAGEMENT	6	17
Survival (%)	1.62	14	HEALTH	1	9

STRICKLEY MAXIMUS (S2287)

Parent Average

MSHGBRM103485601217
DRISGOL MADONNAS PRINCE X
WINBROOK DIAMOND
 aAa: N/A

RED CATTLE GENETICS



Dam Strickley Lady Hermione EX 92
 Averaged In Her 1st 6 Lactations
 7,315Kgs Milk, 4.25% Fat & 3.38% Protein

- Outcross Bloodline For Ireland
- Young Stock Display Great Strength With Dairyness
- EX 92 Dam Calved 10 Times In 9 Years

CLAREFIELD MILLMAN (MS2174)

Parent Average

RDCAUSM000A00020795
FYN AKS X MONARCH X VENVALE SOVEREIGN
 aAa: N/A



Dam: Clarefield Monarch Milly 2611th VG88
 347 Days 11,837Kgs Milk, 3.50%,
 409Kgs Fat, 397Kgs Protein

- This Impressive Young Bull is Maturing Well with Dairyness, Strength & Style.
- His Pedigree Promises High Production, Good Components, Regular Calving & Longevity
- Bred From Proven Bloodlines
- This Pedigree Has It All

Also Available Daughter Proven Dairy Shorthorn Prides Prophet (S1170)

ROYAL HOLL (S506)

Daughter Proven

NMDFRAM006114595144
HOLLYDAYS X DIAMETRE X FRAN VAZOLLA
 aAa: 351



a2a2 Milk



- Outstanding Milk Solids
- 6,800 Milking Daughters In His Proof
- Breeds Strong Robust Cows

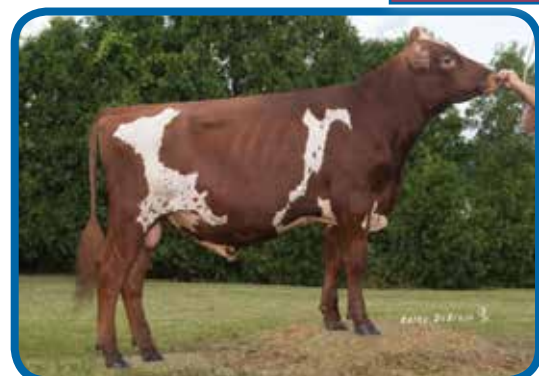
ISU INDEX - DEC. 2016 - FRANCE

Rel. %	Dtrs	Herds	Milk Kgs	F. Kgs	F. %	P. Kgs	P. %
95	6,812	3,397	-65	+25	+0.43	+14	+0.26

CONEBELLA PERCY'S SIREN (AY2289)

Genomic Proof

RDCUSAM000070479091
PERCY X BURDETTE X PARDNER
 aAa: 315



- High Production Ayrshire Sire From USA
- Will Transmit Medium Sized Cows With Excellent Udders
- His Pedigree Suggests Good Fertility

AYSHIRE BREEDING VALUES - DEC. 2016 - USA

Milk Kgs	Fat Kgs	Fat %	Protein Kgs	Protein %
+445	+21	+0.03	+15	+0.02

S
H
O
R
T
H
O
R
N
S

N
O
R
M
A
N
D
E

A
Y
S
H
I
R
E
47

HADDOCK (S12175)

SIMFRAM005502113846

WILDWEST X RATGEBER

aAa: N/A



Genomic Proof



- Well Balanced Fleckvieh Sire
- Will Transmit Strong Robust Cows
- Production with Good Components

PRODUCTION		MANAGEMENT	
		Calving Ease	89
Milk Kgs	1,308	Daughter Fertility	104
Fat Kgs %	+79 Kgs, +0.22%	SCC	104
Protein Kgs %	+52 Kgs, +0.09%	Milking Speed	106
TYPE			
Feet & Legs	113	Type	113
		Udders	108
		Muscularity	95

VALENTIN (S12307)

IT 021001898416

ROUND UP X WEINOLD X WEINOX

aAa: N/A



Genomic Proof



- Easy Calving
- Will Leave Good Udders
- Breeds Strong Robust Cows

PRODUCTION		MANAGEMENT	
		Calving Ease	113
Milk Kgs	604	Daughter Longevity	109
Fat Kgs %	+28 Kgs, +0.03%	SCC	111
Protein Kgs %	+17 Kgs, +0.06%	Milking Speed	109
TYPE			
Feet & Legs	103	Stature	103
		Udders	115
		Muscularity	112

PROFESSOR (S1466)

BSWITAM021001356499

POLLY X VINZEL X SIMON

aAa: N/A



Daughter Proven



- Great Brown Swiss Sire
- Tremendous Protein Improver
- Great Cross on Holstein Cows
- Will Transmit Outstanding Udders +122

OFFICIAL DAUGHTER PROOF - ITALY DEC. 2016

Daughters	188	Herds	184	Rel. %	94	Milk Kgs	+85	Type	+117
Fat Kgs	+13	Fat %	+0.11	Pr. Kgs	+21	Pr. %	+0.25	Udders	+122

DAMIAN DN (S2301)

MRYNLDM000485779718

DUISENBERG X GUIDO X KAREL

aAa: N/A



Daughter Proven



- The No. 4 Rotbunt Sire in Germany, December 2016
- Tremendous Fat & Protein
- Outcross Bloodline for Breeders

VIT GERMAN PROOF DEC. 16

RZG - 113

Milk Kg	F Kg	F %	P Kg	P %	Rel.	Dtrs	Herds
-6	+10	+0.15	+22	+0.32	84	68	32

Other Sires Available: Thorgal (S911), Sunnyside Don (SJD), Owen (S1100)

CRASAT (S1259)

Daughter Proven

FRAM003803078751

REDON/ MICMAC/ GARDIN

aAa: 465 A2A2

Kappa Casein: BB



Daughters	Milk Kgs	Fat Kgs	F (%)	Protein Kgs	P (%)	Days
1st Lac.	8,337	331	+3.97	297	+3.57	305

Production: ISU 149

1,394 Daughters - 1,124 Herds - Reliability: 95%

INEL	P Kgs	P (%)	F Kgs	F (%)	Milk Kgs
+46	37	+0.16	37	+0.09	731

Functional Traits - Temperament: 106 Calving Ease: 91

- Easy Calving Sire
- Great Production with Good Solids
- 1,300 Milking Daughters in his Proof
- Available in Sexed Semen

HUMMER (M02281)

Genomic Proof

FRAM003803232417

FLASH JB/ TRIOMPHE/ PERNAN

aAa: 426

Kappa Casein: AB



Dam's	Milk Kgs	Fat Kgs	F (%)	Protein Kgs	P (%)	Days
Lac.	11,721	430	+3.67	375	+3.20	305

Production: ISU 155

0 Daughters - 0 Herds - Reliability: 72%

INEL	P Kgs	P (%)	F Kgs	F (%)	Milk Kgs
+40	34	+0.05	34	+0.02	1,011

Functional Traits - Temperament: 111 Calving Ease: 93

- Very Easy Calving Sire
- Outstanding Production
- Will Breed Medium Sized Cows With Good Udders
- Available in Sexed Semen

ELASTAR (M02284)

Daughter Proven

FRAM000109015538

ROBIN/ PERNAN/ MICMAC

aAa: 423

Kappa Casein: AB



Daughters	Milk Kgs	Fat Kgs	F (%)	Protein Kgs	P (%)	Days
1 st Lac.	8,329	339	+4.07	295	+3.54	305

Production: ISU 158

1,451 Daughters - 1,062 Herds - Reliability: 95%

INEL	P Kgs	P (%)	F Kgs	F (%)	Milk Kgs
+48	35	+0.10	56	+0.28	779

Functional Traits - Temperament: 117 Calving Ease: 90

- Ideal for Grazing Systems
- High Fat & Protein Sire
- Outstanding Semen Fertility

IOUPY (M04145)

Genomic Proof

MONFRAM000113016354

BRINK/ COOL/ PIOMBO

aAa: 564 A2A2

Kappa Casein: BB



Dam's	Milk Kgs	Fat Kgs	F (%)	Protein Kgs	P (%)	Days
Lac.	11,092	406	+3.66	369	+3.33	305

Production: ISU 146

0 Daughters - 0 Herds - Reliability: 72%

INEL	P Kgs	P (%)	F Kgs	F (%)	Milk Kgs
+35	27	+0.01	42	+0.14	856

Functional Traits - Temperament: 120 Calving Ease: 92

- Very Easy Calving Sire
- Ideal for Grazing Systems
- Excellent Temperament of 120

IALGAN (M04144)

Genomic Proof

MONFRAM002534223293

GIGANT/ CORTIL/ VIMONT

aAa: 435

Kappa Casein: AB



Dam's	Milk Kgs	Fat Kgs	F (%)	Protein Kgs	P (%)	Days
Lac.	7,775	306	+3.93	267	+3.44	305

Production: ISU 142

0 Daughters - 0 Herds - Reliability: 71%

INEL	P Kgs	P (%)	F Kgs	F (%)	Milk Kgs
+37	27	+0.06	45	+0.25	663

Functional Traits - Temperament: 125 Calving Ease: 91

- Transmits High Fat & Protein Percentages
- Ideal for Cross Breeding
- Good Beef Value

ILANNE (M04146)

Genomic Proof

MONFRAM000113019487

BRINK/ CARTER/ PERNAN

aAa: N/A A2A2

Kappa Casein: BB



Dam's	Milk Kgs	Fat Kgs	F (%)	Protein Kgs	P (%)	Days
Lac.	8,389	369	+4.40	311	+3.95	305

Production: ISU 142

0 Daughters - 0 Herds - Reliability: 72%

INEL	P Kgs	P (%)	F Kgs	F (%)	Milk Kgs
+32	27	+0.08	36	+0.09	520

Functional Traits - Temperament: 136 Calving Ease: 93

- Best Temperament in Breed of 136
- Great Protein Percentages
- Easy Calving Sire

CORTIL (M02285)

Daughter Proven

FRAM002547072148
PIOMBO/ LINOU/ GARDIAN
 aAa: 432
 Kappa Casein: AB



Daughters	Milk Kgs	Fat Kgs	F (%)	Protein Kgs	P (%)	Days
1 st Lac.	8,355	328	+3.93	291	+3.48	305
Production: ISU 137						
2,561 Daughters - 1,724 Herds - Reliability: 95%						
INEL	P Kgs	P (%)	F Kgs	F (%)	Milk Kgs	
+36	29	+0.02	36	+0.06	800	
Functional Traits - Temperament: 128 Calving Ease: 89						

- Great Production Sire
- Super Temperament
- 2,500 Milking Daughters in Proof

FICASTONE (M02283)

Daughter Proven

FRAM000110014132
URBANISTE/ OXBOW/ NIKOS
 aAa: 423 A2A2
 Kappa Casein: BB



Daughters	Milk Kgs	Fat Kgs	F (%)	Protein Kgs	P (%)	Days
1 st Lac.	7,978	324	+4.07	283	+3.55	305
Production: ISU 125						
1,171 Daughters - 879 Herds - Reliability: 95%						
INEL	P Kgs	P (%)	F Kgs	F (%)	Milk Kgs	
+23	15	+0.16	28	+0.31	93	
Functional Traits - Temperament: 119 Calving Ease: 89						

- The Cheese Maker
- Solids Specialist, +0.31% of Fat & +0.16% of Protein
- Available in Sexed Semen

DAHON (S1019)

Daughter Proven

FRAM002521886883
SCOOP/ PLUMITIF/ MICMAC
 aAa: 561 A2A2
 Kappa Casein: BB



Daughters	Milk Kgs	Fat Kgs	F (%)	Protein Kgs	P (%)	Days
1 st Lac.	8,048	319	+3.96	282	+3.51	305
Production: ISU 125						
242 Daughters - 224 Herds - Reliability: 95%						
INEL	P Kgs	P (%)	F Kgs	F (%)	Milk Kgs	
+19	14	+0.09	20	+0.13	261	
Functional Traits - Temperament: 111 Calving Ease: 90						

- Perfect Bull for Cross Breeding
- Ideal Grazing Type Sire
- Excellent Udders



Welcome To Our New Section On Beef Semen For The Dairy Herd. In Dovea Genetics There Has Been A Major Investment In Beef Bulls For The Dairy Herd Over The Past Few Years. We Are Delighted To Offer Our Customers A Range Of Short Gestation Easy Calving Beef Bulls Which Will Add Value To Your Dairy Enterprise. To Ensure That These Bulls Are Used Correctly In Your Herd Please Talk To One Of Our Area Representatives Or A.I. Technicians To Ensure That The Correct Bull Is Used.

Celestin Du Fond De Bois (DFD)

BELGIAN BLUE

6.10% Calving Difficulty
(80% Reliability)

- Celestin is the Easiest Calving Blue Bull Available Commercially in Irish AI
- Dovea’s No. 1 Choice Belgian Blue Bull for Dairy Cows for 2017



Dolla Iceberg (BB2145)

BELGIAN BLUE

8.20% Calving Difficulty
(47% Reliability)

- First Calves are Easily Born and Perfectly Marked
- Ideal Choice for Farmers Selling Calves
- Dam is Full Sister to the Legendary BBQ



Ringfort Goulu (RFF)

BELGIAN BLUE

10.90% Calving Difficulty
(65% Reliability)

- Easy Calving Short Gestation Belgian Blue Sire
- Huge Satisfaction with Progeny Born to Date



Norton Jaguar (BB4085) TEST SIRE

BELGIAN BLUE

7.30% Calving Difficulty
(7% Reliability)

- Purchased in 2016 for the Easy Calving Dairy Market
- From a Natural Calving Line in the UK



Elderberry Galahad (EBY)

LIMOUSIN

3.60% Calving Difficulty
(99% Reliability)

- Ireland's No. 1 Limousin Sire Suitable for Use on Dairy Cows in 2017
- Excellent Calf Quality Combined with Calving Ease
- 288 Days Gestation (Top 1% of the Breed)



Tomschoice Iceberg (ZXT)

LIMOUSIN

3.50% Calving Difficulty
(74% Reliability)

- Excellent Calf Quality Combined with a 288 Day Gestation Length
- Ideal Sire For Dairy Cows
- Five Star Replacement Sire (€128) Five Star Across Breeds



Coom Indurain (CH2000)

CHAROLAIS

4.00% Calving Difficulty
(89% Reliability)

- Top 1% of the Breed for Gestation Length (288 Days) and Calving Ease
- Excellent Balance Between Calving Ease And Excellent Calf Quality



Cloondroon Calling (QCD)

SIMMENTAL

6.90% Calving Difficulty
(97% Reliability)

- Thick Easy Fleshed Progeny Inspected in Irish Dairy Herds
- Huge Replacement Index of €170
- Calling will Breed High Index Heifer Calves Suitable for Suckler Replacements



Ulsan (SA2189)

SALER

1.10% Calving Difficulty
(75% Reliability)

- Very Easy Calving Saler Bull
- Five Star Gestation Length (282 Days) (Top 1% of All Breeds)



Glencardon Ali (SP4056)

SPECKLE PARK

1.90% Calving Difficulty
(60% Reliability)

- Easy Calving Short Gestation Option for Dairy Cows
- Progeny are Very Smart Saleable Calves



Cill Cormaic Kasper (KZP)

HEREFORD

1.90% Calving Difficulty
(98% Reliability)

- **THE EASY CALVING SPECIALIST**
- Ireland's No. 1 Hereford Bull Available on Calving Ease
- **1.90% CALVING DIFFICULTY** Combined with a Gestation Length of 284 Days



Gageboro Morgan (GGM)

HEREFORD

3.90% Calving Difficulty
(98% Reliability)

- Morgan has the Perfect Balance Between Calving Ease and Exceptional Calf Quality
- Dovea's No.1 Choice For Dairy Cows in 2017



Cill Cormaic Marvel (HE2376)

HEREFORD

3.60% Calving Difficulty
(48% Reliability)

- Easy Calving Sire Producing Excellent Well Made Hairy Calves
- Marvel is the Perfect Choice for Dairy Cows



Gouldingpoll 1 Easy Peezy (HE2286)

HEREFORD

2.20% Calving Difficulty
(46% Reliability)

- Homozygous Polled Hereford Sire – All Calves Will Be Born Without Horns
- Easy Calving Genetics Combined with Five Star Gestation Length (Top 1% of the Breed)



F.H. William (HE4080) TEST SIRE

HEREFORD

4.50% Calving Difficulty
(21% Reliability)

- William is an Exceptional New Hereford Bull for Irish A.I.
- Will Deliver Progeny Perfect for Farmers in Their Own Finishing System



Clonmelvin Ollie (HE4105) TEST SIRE

HEREFORD

2.70% Calving Difficulty
(36% Reliability)

- Son of the Easy Calving Specialist 'Cill Cormaic Kasper'(KZP)
- Excellent Quality Bull with Length and Confirmation





Cairnmor Jameson (JZJ)

1.80% Calving Difficulty (87% Reliability)

- Dovea's No. 1 Sire Available on Gestation Length
- -3.50 Days Gestation Combined With Being Very Easy Calving
- Again Jameson is an Excellent Option for Maiden Heifers or Cows

Birches Littleman (ZLT)

2.00% Calving Difficulty (99% Reliability)

- Exceptional Balance Between Calving Ease & Calf Quality
- Gestation Length of -2.30 Days
- Dovea's No. 1 Angus Bull for Dairy Heifers in 2017

Portauns Volcano (AA2259)

1.30% Calving Difficulty (31% Reliability)

- Progeny are Very Small Born But Develop Rapidly
- Ideal Choice for Farmers Selling Calves at a Young Age
- Perfect Choice for Maiden Heifers or Small Cows in 2017

Liss Brendan (AA2163)

1.70% Calving Difficulty (62% Reliability)

- Easy Calving Short Gestation Angus (282 Days)
- Excellent Calf Quality
- Suitable For Well Grown Maiden Heifers & Cows

Cahirmee Gino (GZA)

2.50% Calving Difficulty (98% Reliability)

- Easy Calving Sire on Dairy Cows Without Compromising on Quality
- Gino Will Deliver Calves That Will Command Top Prices at Calf Sales

Duibhgiolla Luigi (AA2301)

2.00% Calving Difficulty (43% Reliability)

- An Exceptional Angus Bull Combining Easy Calving & Excellent Quality
- Luigi Has to be Considered by Dairy Farmers in a Finishing System

Keakil Lord Justy (AA2370) TEST SIRE

1.40% Calving Difficulty (49% Reliability)

- Purchased for the Easy Calving Market Based on 3 Generations of Easy Calving Pedigree
- Son Of Catron Roe Ernie (CTE) (Traditional Irish Breeding)

Smerwick Luke (AA4030) TEST SIRE

1.00% Calving Difficulty (49% Reliability)

- Three Generations of Real Easy Calving Pedigree (MKP X MLJ X LRH)
- Will Be an Ideal Sire for Maiden Heifers or Smaller Type Cows

DOVEA AREA REPRESENTATIVES



NICHOLAS BERGIN
Clare, Galway, Sth. Mayo, Roscommon
M: 086 2515869



PEARSE M^cNAMEE
Donegal
M: 086 8106474



COLM CHAMBERS
Cavan
M: 087 6703093



JOHN LYNCH
Limerick
M: 087 6605506



MARTIN FLANAGAN
Leitrim, Longford, Nth. Mayo & Sligo
M: 087 1226636



PAT M^cCULLEN
Westmeath & Meath
M: 087 9062041



TIM FITZMAURICE
Kerry
M: 087 2359709



NEIL LAHART
Carlow, Kilkenny, Waterford, Dublin
M: 086 2537087



KIERAN SHIELDS
Louth & Monaghan
M: 086 8283315



JEREMIAH DALY
Mid & Sth. Kerry
M: 087 6755845



PAT O'CONNOR
Cork
M: 087 9209632



TONY FLANNERY
Tipperary & Laois
M: 086 8068006



DENIS GALVIN
West Kerry
M: 086 6095081



BERTIE DESMOND
Mid Cork
M: 086 8338321



ANTHONY DOORLEY
Offaly
M: 086 8509159



MICHAEL O'CONNOR
Kildare, Wexford, Wicklow
M: 087 9259854



COLIN O'LEARY
West Cork
M: 087 6265990



P.J. COUGHLAN
Nenagh
M: 087 2990007

Dovea Genetics

Dovea, Thurles, Co Tipperary, Ireland Tel: +353 (0) 504 21755
Fax: 0504 22768 E: info@doveagenetics.ie www.dovea.ie

